

H5N1 in the US: Food security and trade have global impact

33rd WSLH Wisconsin Virology Conference

June 11th, 2025

Keith Poulsen, DVM PhD, DACVIM

keith.poulsen@wisc.edu

www.wvdl.wisc.edu



Photo: Bryce Richter

 **Not** a virologist

1. Look to the cows! - *Pasteurization*
2. NMST is key to virus *elimination*
3. Emergency response capacity is *low*

Economic costs and dairy farm owner vulnerability

National industry with constant movement

Business continuity and animal welfare are critical

- Data protection
- Define quarantine
- Market access
- Reporting results

The economic burden to the farm is \$191 per cow

\$ 1 million per month on a 5000-cow dairy (Cornell Dairy Group)

\$1000 per cow per farm

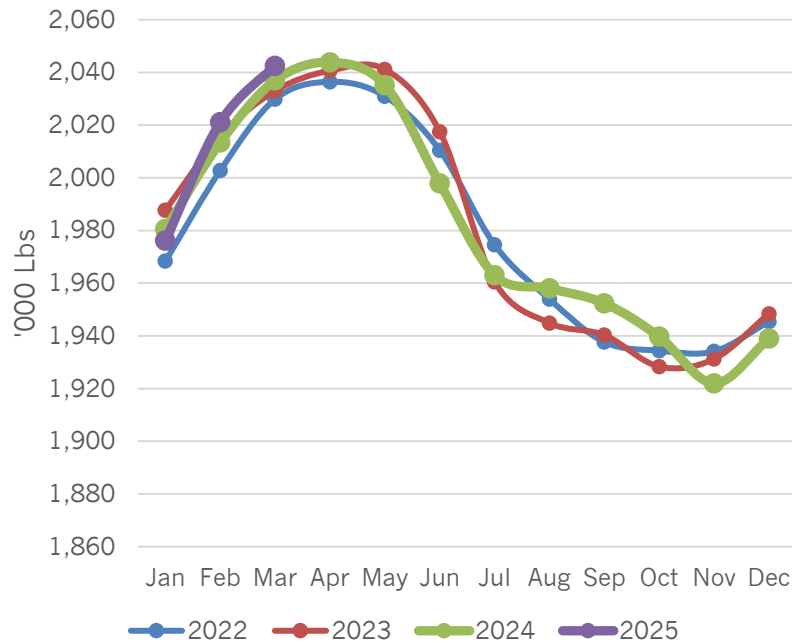
Total Confirmed H5N1 in Dairy Cattle Cases

HPAI in Dairy Cattle Confirmed Cases by USDA
 (30-Day Rolling Total)

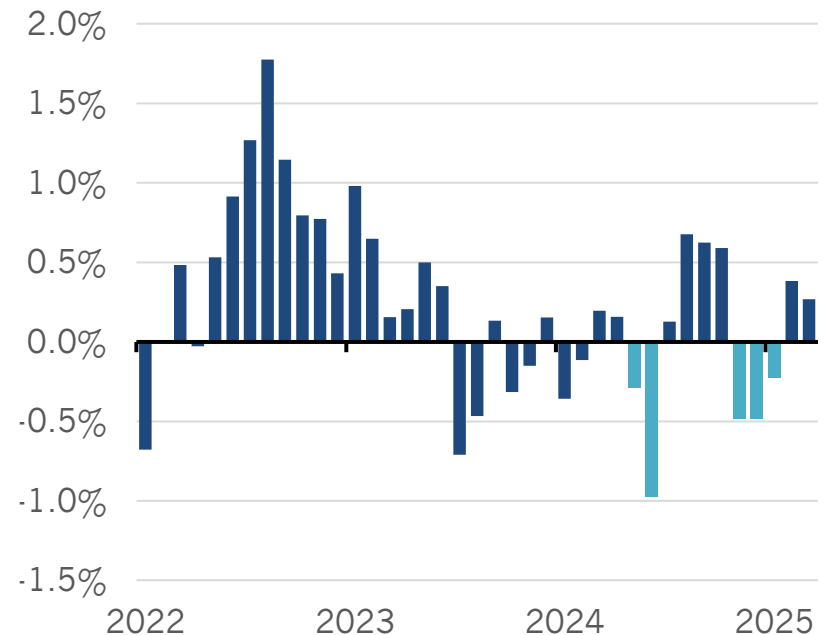


U.S. milk production is buffered

United States Milk Production Per Cow by Month

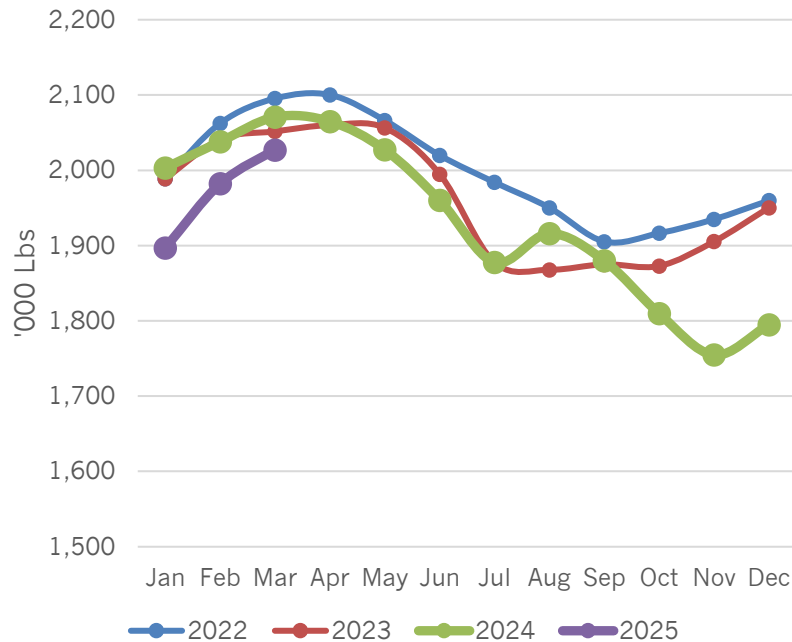


YOY Change in U.S. Milk Production Per Cow

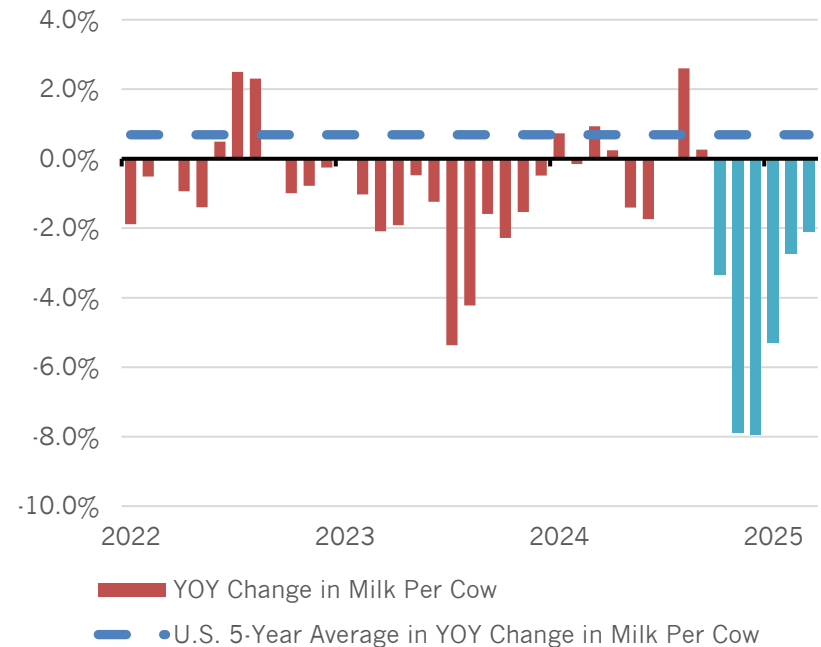


California milk production drop: -3.4% in Oct; -7.9% in Nov; -8% in Dec

California Milk Production Per Cow
by Month

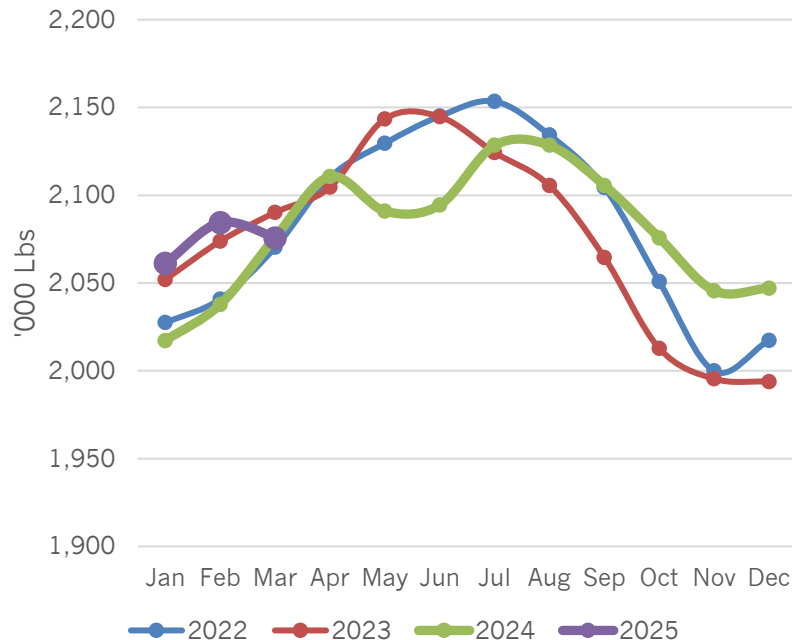


YOY Change in California Milk Per
Cow

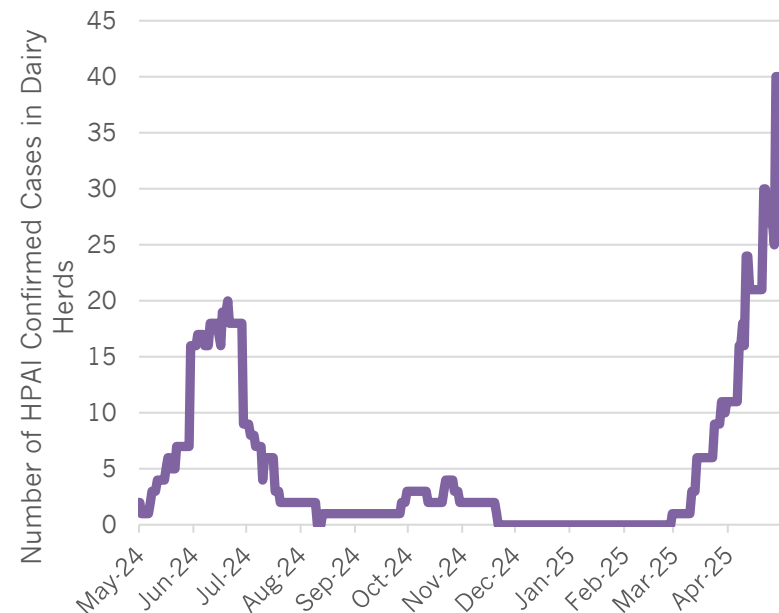


Idaho: March productivity drop is expected to worsen in April

Idaho Milk Production Per Cow by Month



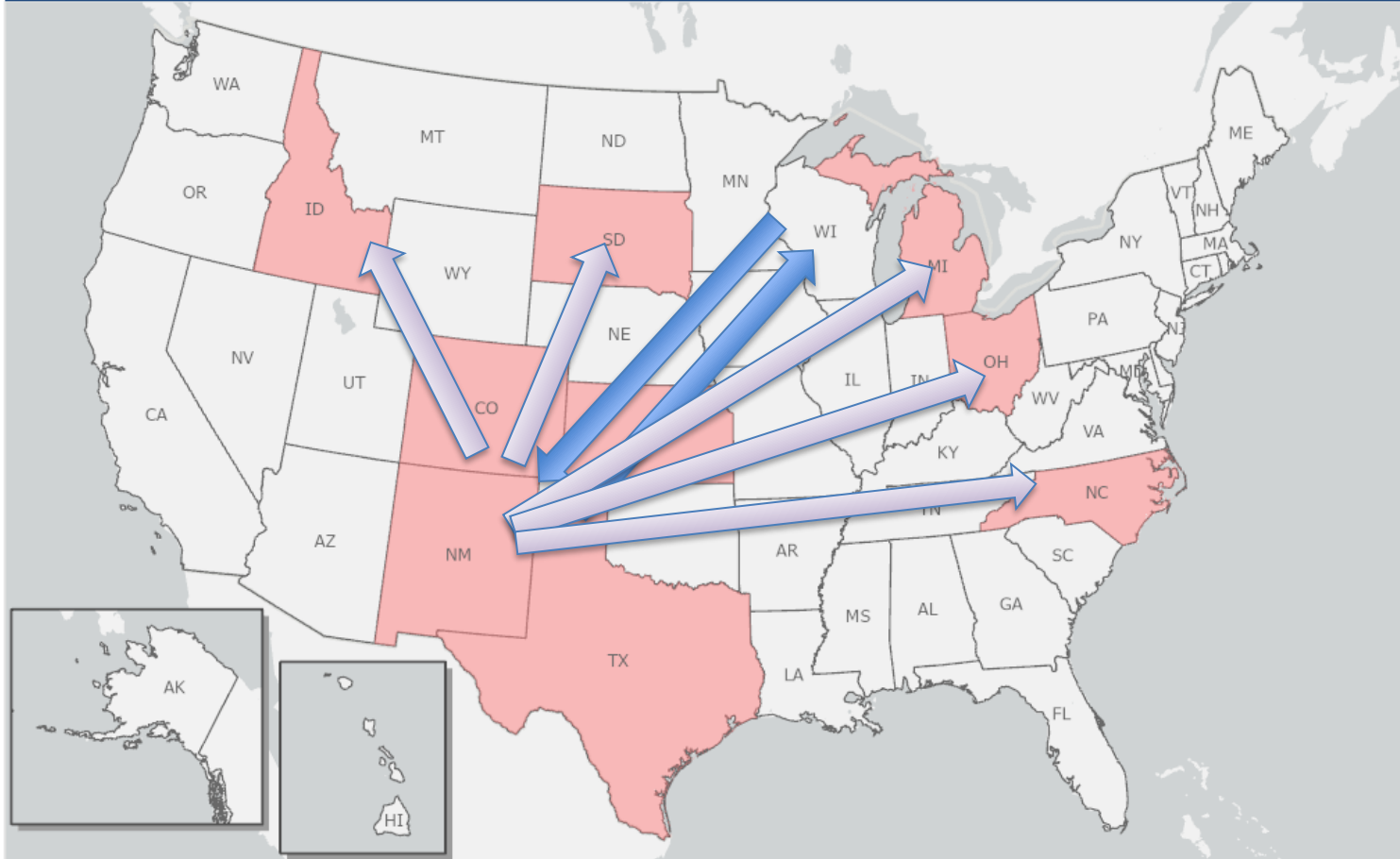
HPAI in Dairy Cattle Confirmed Cases in Idaho
(30-Day Rolling Total)



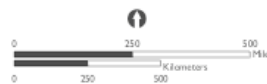


United States
 Department of
 Agriculture

HPAI in Domestic Livestock – Affected States



 Confirmed Affected States

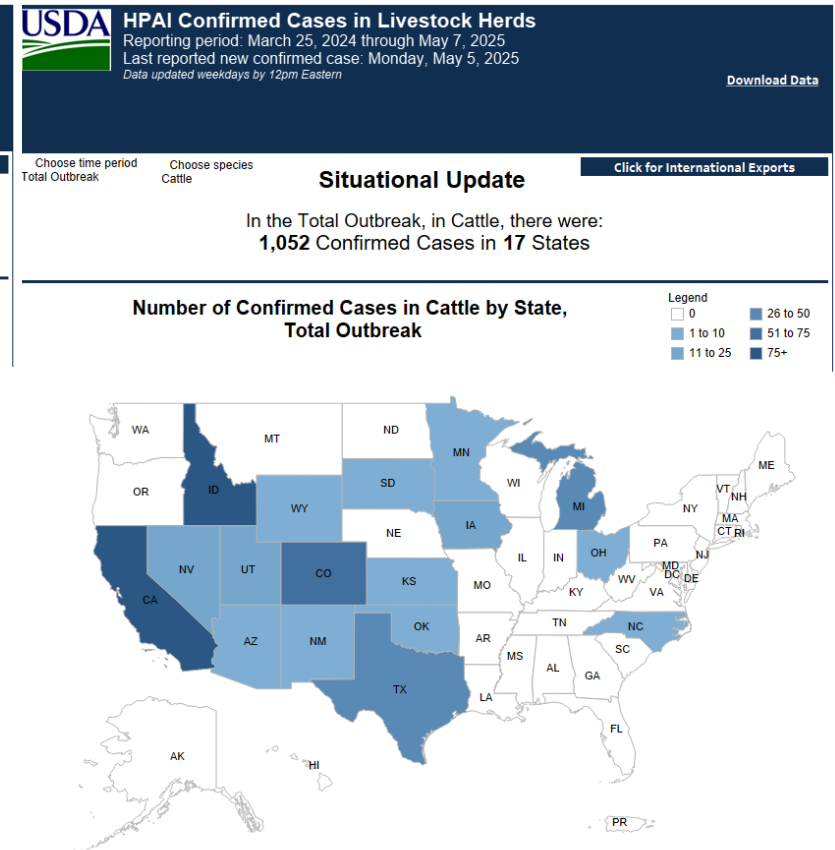
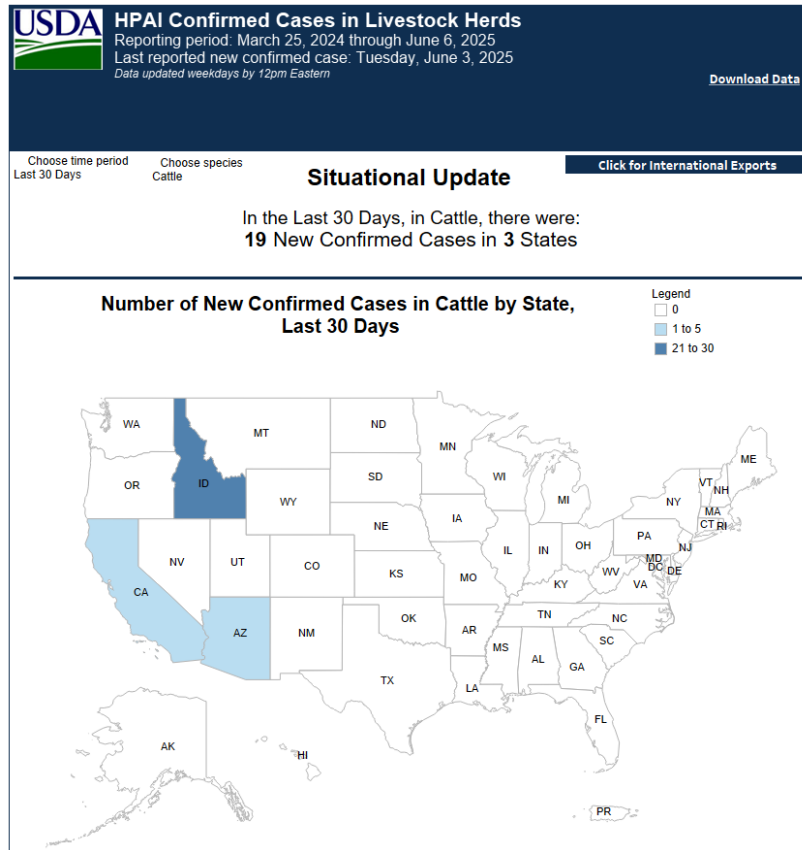


Data Source:
 APHIS, USDA EMRS
 Spatial Reference:
 North America Albers Equal Area Conic

USDA APHIS
 2150 Centre Ave
 Fort Collins, Co 80526

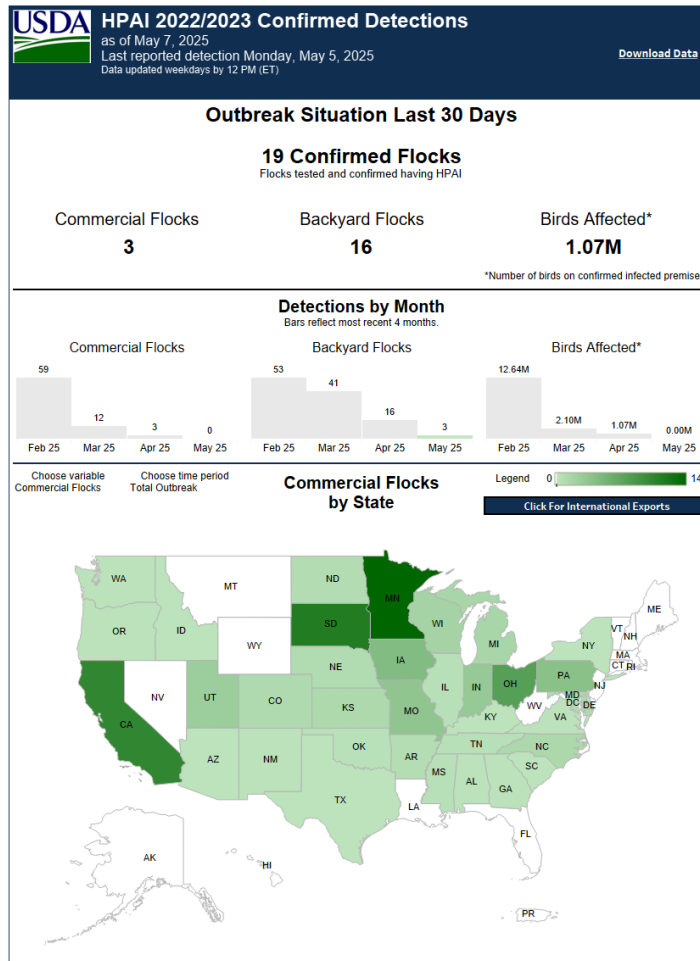
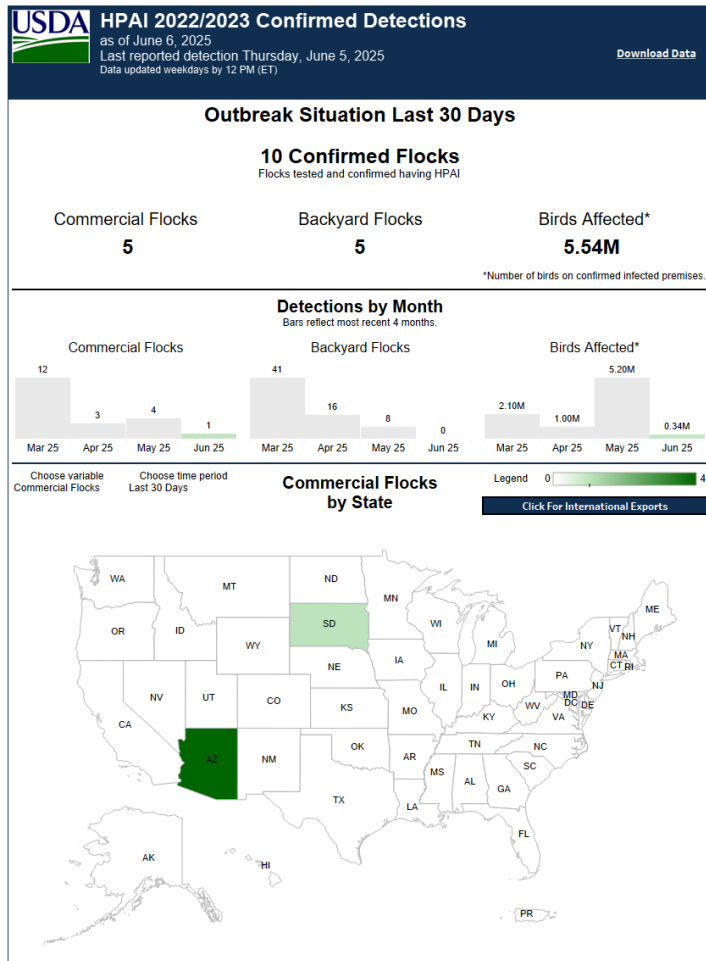
These data, and all the information contained therein, have been collected by the U.S. Department of Agriculture's Animal and Plant Health Inspection Service (APHIS), or by its cooperation on APHIS' behalf, for restricted government purposes only and is the sole property of APHIS. See full disclaimer: <https://www.aphis.usda.gov/hdp/data-disclaimer>

Federal Order of 5/5/24 was not effective



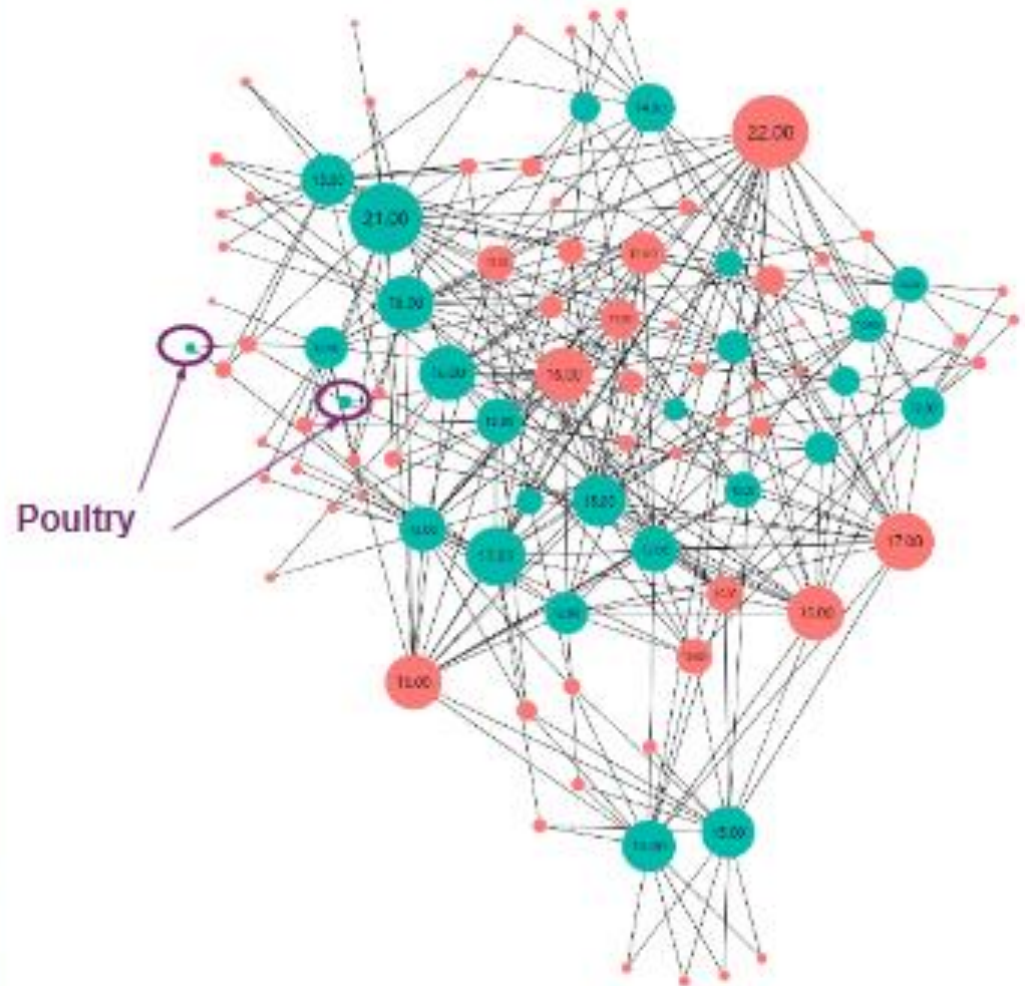
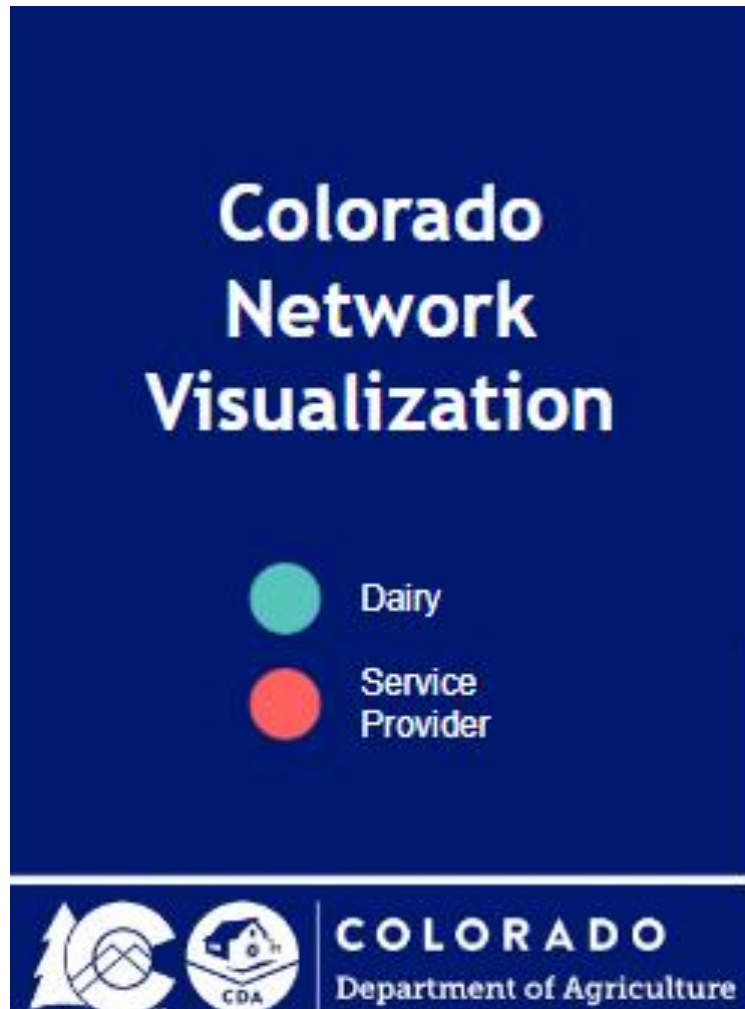
B3.13, D1.1

New HPAI strains circulating – priority over dairy cattle



D1.1
D1.2

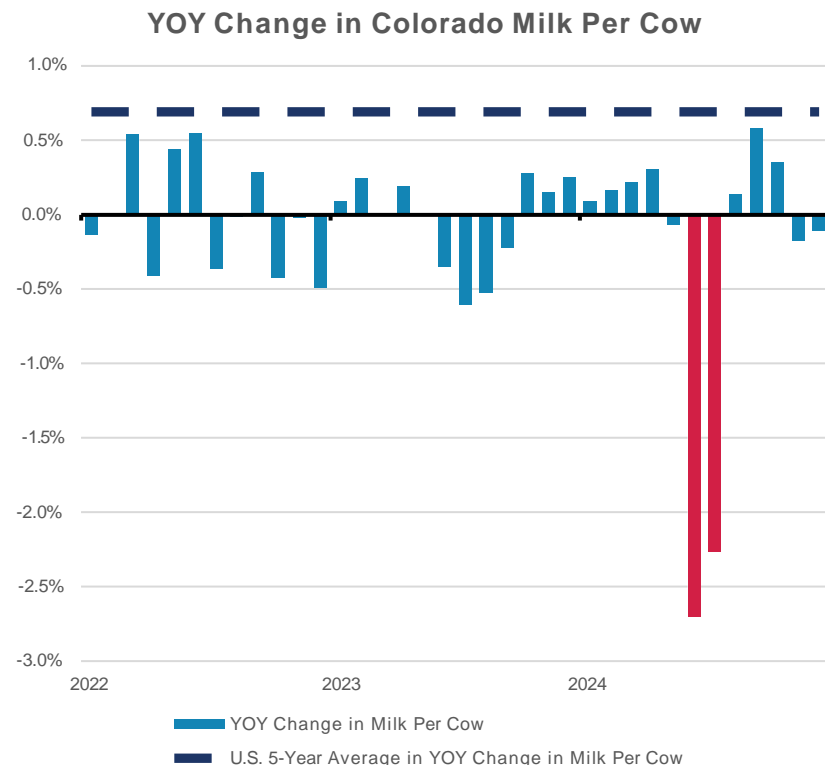
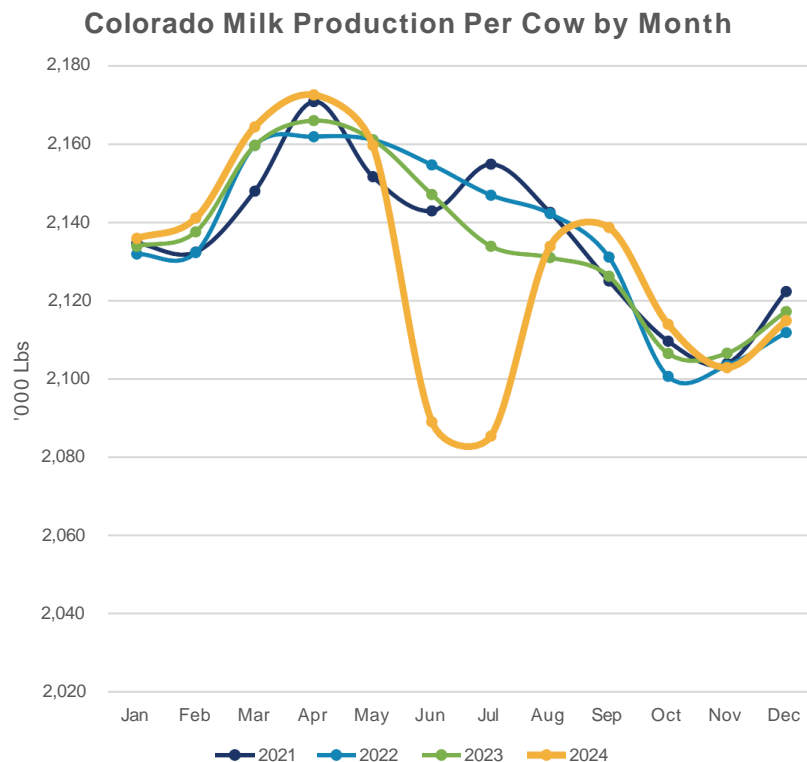
Lack of biosecurity → repeatable patterns

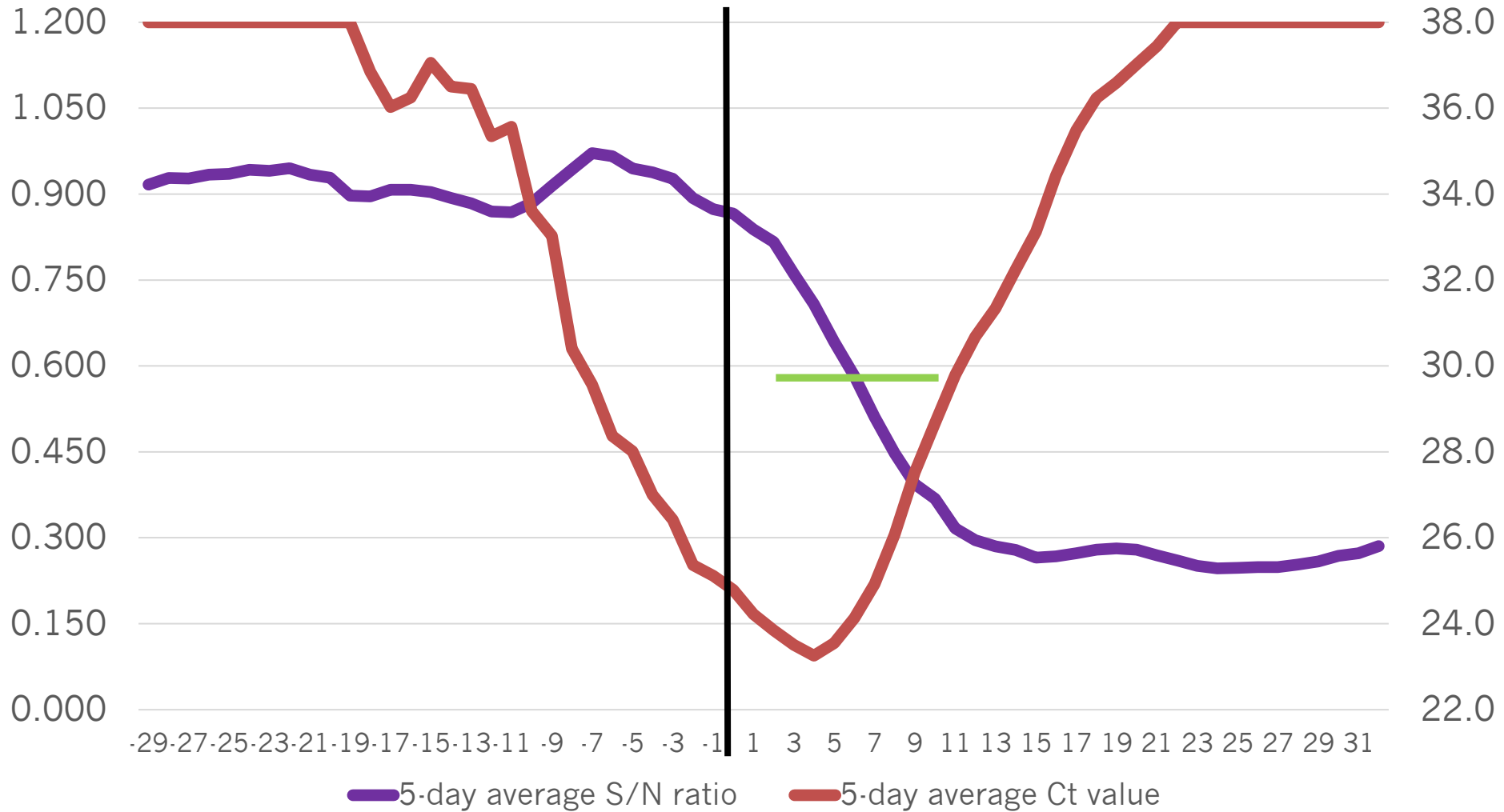


Confidential – Not for Public Distribution or Use Without Permission

Data courtesy of Dr. Maggie Baldwin, DVM – Colorado State Veterinarian

Colorado: -2.5% decline in June-July August back to normal





Data courtesy of Dr. Drew Magstadt, ISU VDL

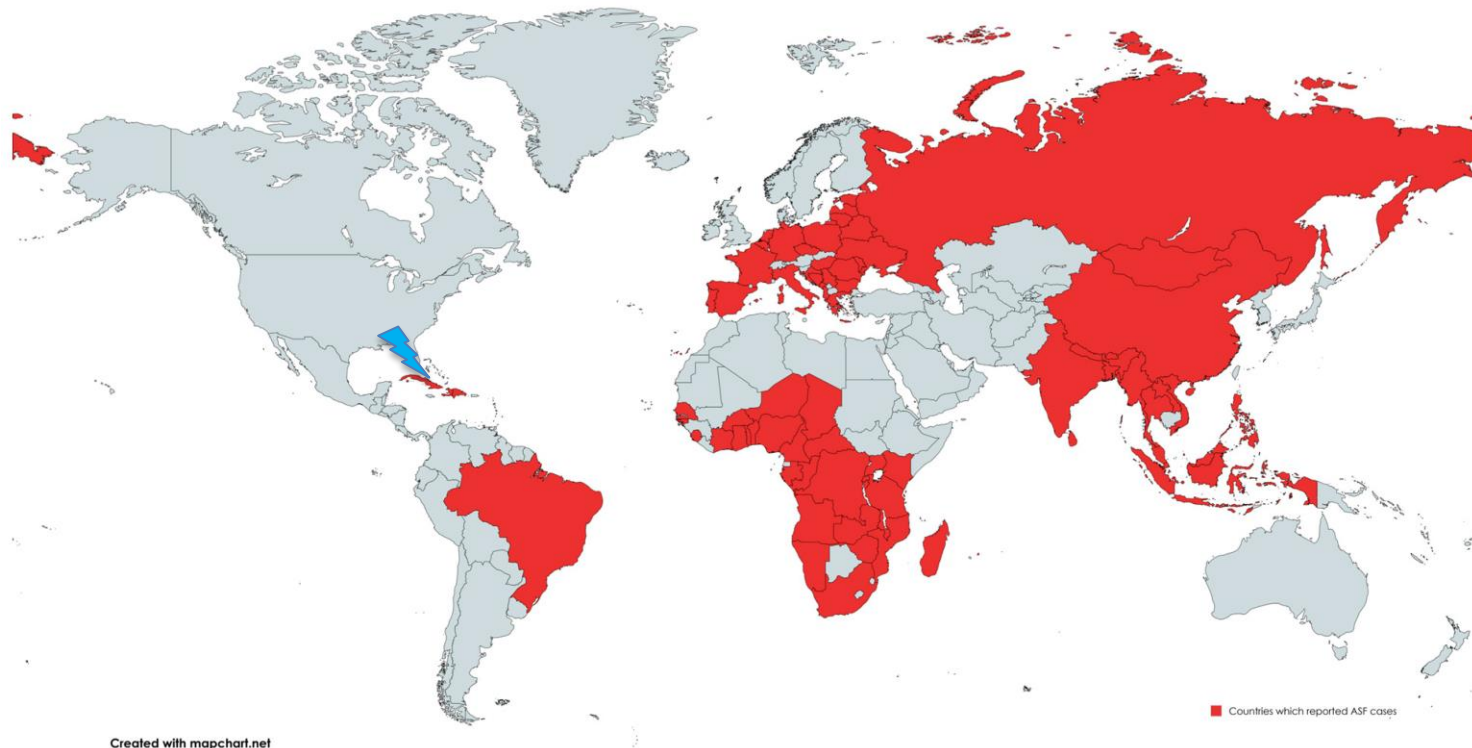
Pulse Survey Key Findings

	Pulse 1 (Apr 2024)	Pulse 2 (May 2024)	Pulse 3 (Jun 2024)	Pulse 4 (Sept 2024)	Pulse 5 (Feb 2025)
AWARENESS Top-of-mind awareness of H5N1 infections in dairy cows	23%	19%	13%	14%	21%
CONCERN* Concern among those aware of the headlines significantly increased	63%	66%	65%	66%	81%
TRUST Trust that the milk supply is safe decreased	41%	43%	50%	55%	41%
CONSUMPTION Intended to consume less	39%	32%	20%	24%	34%

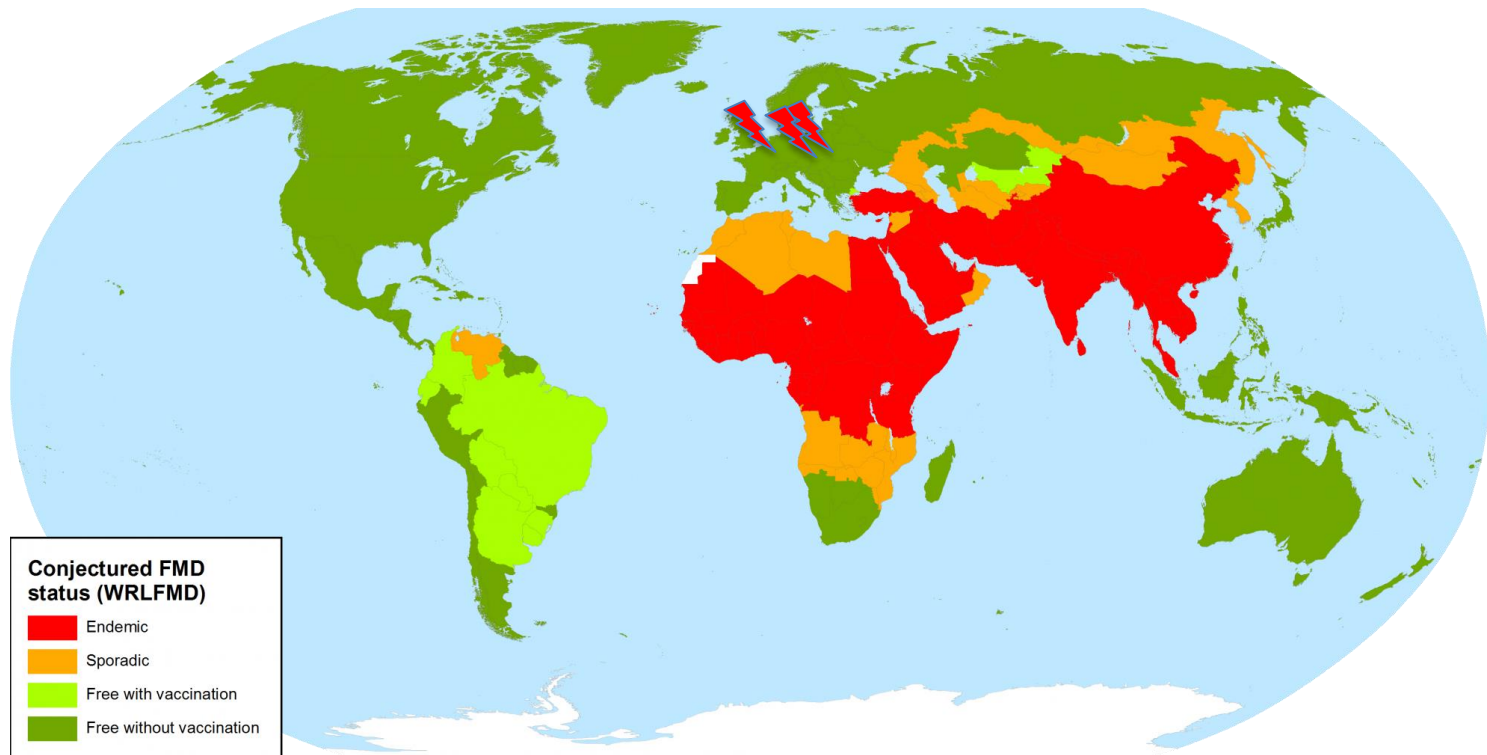
* Very Concerning or Somewhat Concerning

Four *immediate* threats to US national security

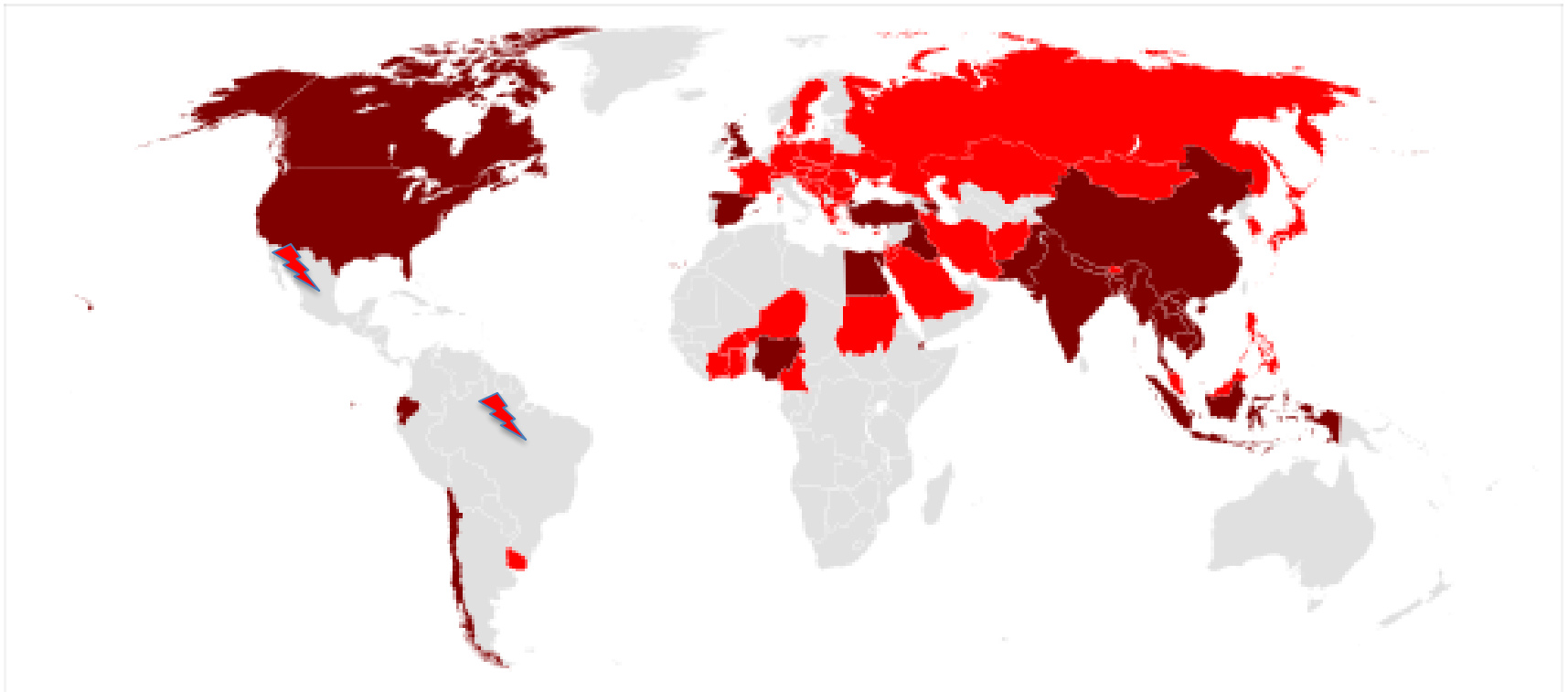
AFRICAN SWINE FEVER



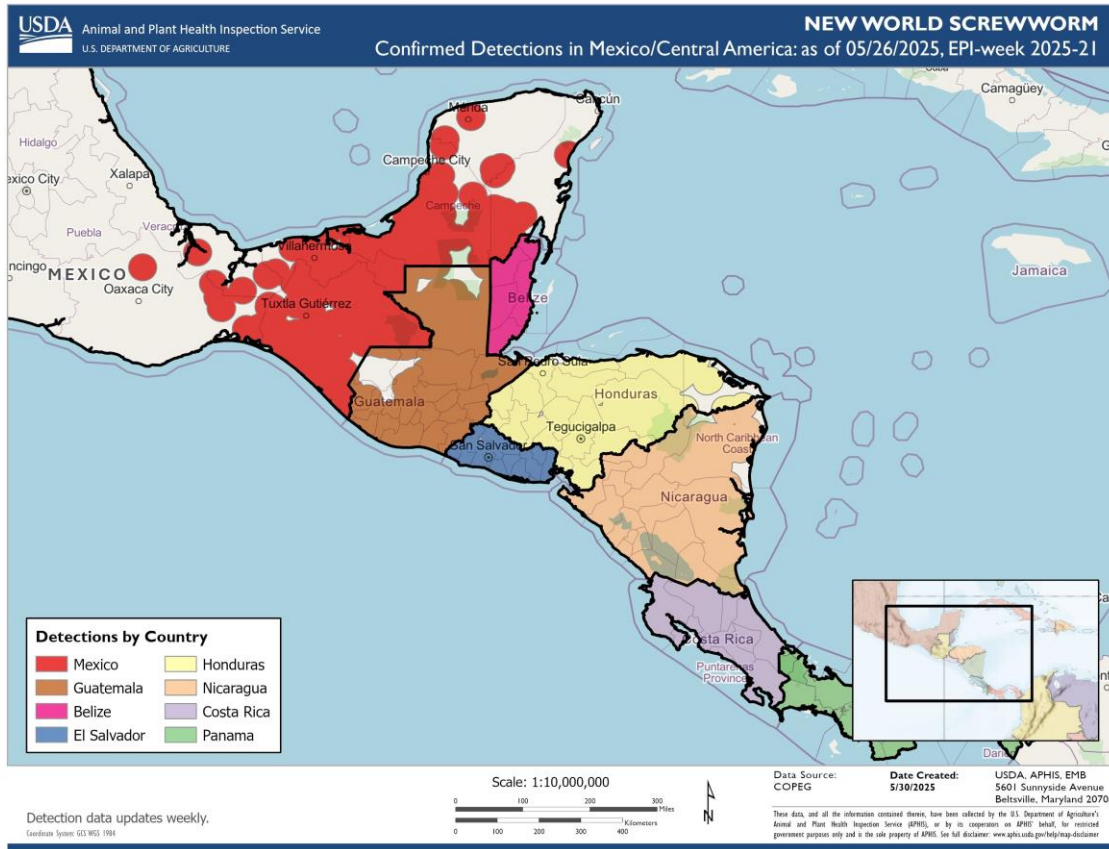
Four *immediate* threats to US national security Foot and Mouth Disease



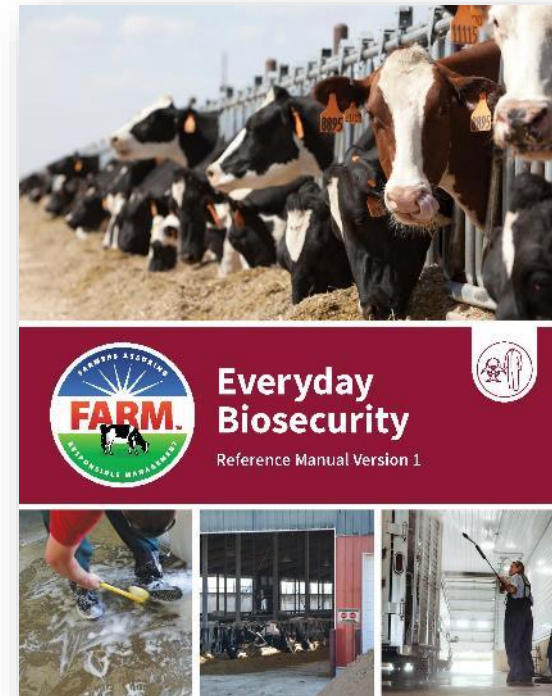
Four *immediate* threats to US national security Foot and Mouth Disease



Four *immediate* threats to US national security New world screwworm



Developing FARM Everyday Biosecurity



[nationaldairyfarm.com/
farm-biosecurity/](https://nationaldairyfarm.com/farm-biosecurity/)

www.wvdl.wisc.edu

Keith Poulsen, DVM PhD, DACVIM
keith.poulsen@wisc.edu

