

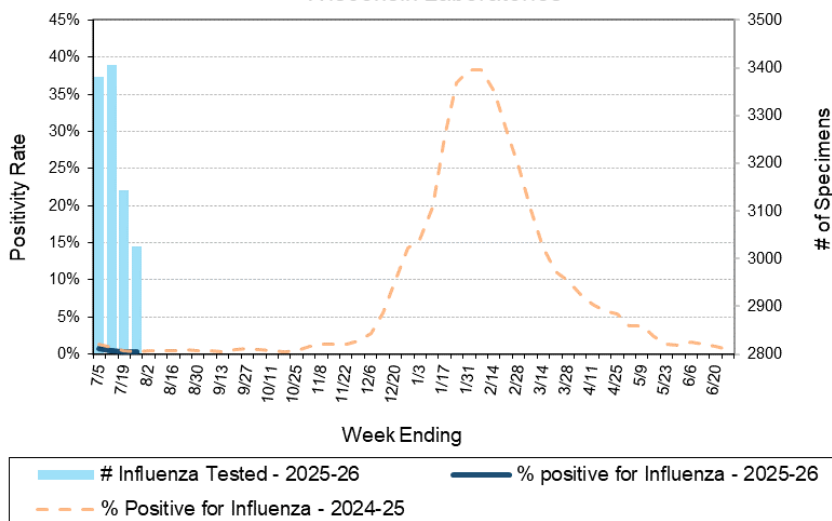
# Laboratory Surveillance Report

**\*\* For a selection of pathogens, participating Wisconsin clinical laboratories voluntarily report to WSLH on a weekly basis the total number of tests performed, and the number of those tests with positive results.**

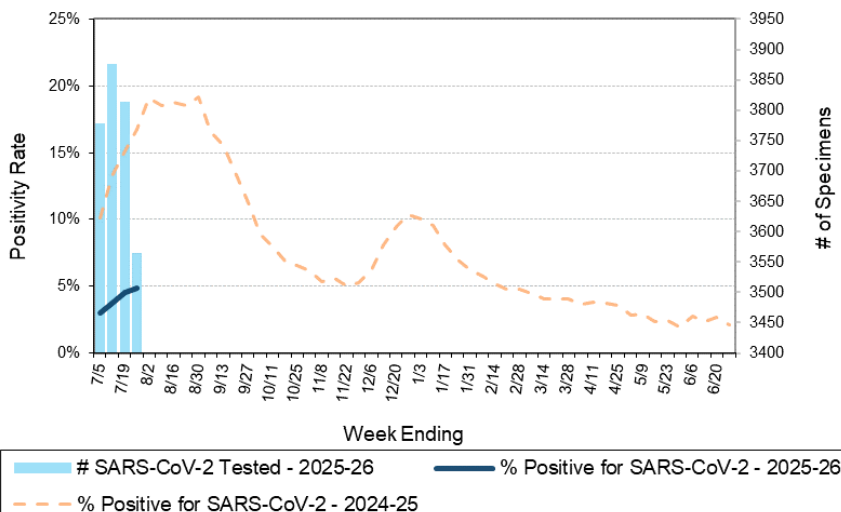
## To Enhance Surveillance Activities, Please Send:

- **All Testing Sites:**
  - ◇ **ALL Influenza positive specimens:**
    - **Especially, Influenza A specimens:**
      - From patients admitted to the ICU
      - With swine, bovine or poultry exposure
      - With international travel history
      - That fail to subtype as H1 or H3 (Ct <35)
  - ◇ **Up to 5 SARS-CoV-2 positive specimens per week**
  - ◇ **All Enterovirus positive CSF specimens**

Number Tested and Positivity Rate for **Influenza** by PCR at Wisconsin Laboratories



Number Tested and Positivity Rate for **SARS-CoV-2** by PCR at Wisconsin Laboratories



## Respiratory Snapshot:

- Influenza activity is **low** in Wisconsin (0.3%) and nationally (0.4%)
- Rhinovirus/Enterovirus (12.3%) activity is **high** in Wisconsin
- SARS-CoV-2 activity (4.8%) is **increasing** in Wisconsin

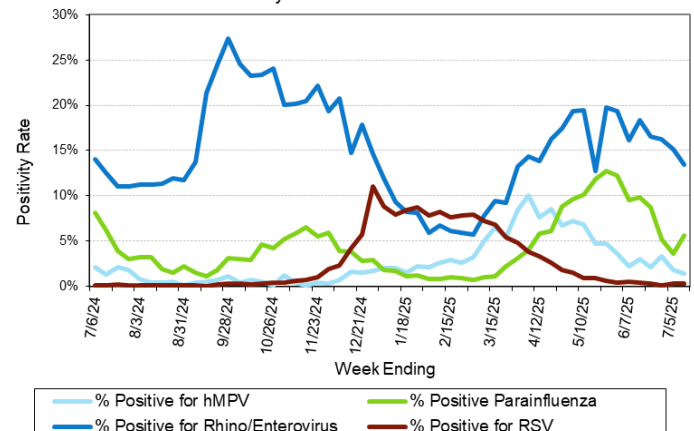
## Enteric Snapshot:

- Norovirus (6.9%), Campylobacter (3.8%) and Salmonella (3.5%) activities are **elevated** in Wisconsin

## Other:

- Group A *Streptococcus* activity in Wisconsin is **high** (15.1%).

Positivity Rate of **hMPV, Parainfluenza, Rhino/Enterovirus and RSV** by PCR at Wisconsin Laboratories



# Laboratory Surveillance Report

## Enteric Pathogens

Week Ending 7/26/25

	# Tested	% Positive
Norovirus***	508	6.9%
<i>Campylobacter</i>	631	3.8%
<i>Salmonella</i>	631	3.5%
STEC	631	1.7%
<i>Giardia</i>	542	1.3%
<i>Plesiomonas shigelloides</i>	500	1.2%
<i>Cyclospora</i>	481	1.0%
Sapovirus	467	0.9%
Rotavirus	525	0.8%
<i>E. coli</i> 0157	306	0.7%
Adenovirus 40/41	467	0.6%
<i>Cryptosporidium</i>	541	0.6%
Astrovirus	467	0.4%
<i>Shigella</i> /EIEC	631	0.2%
<i>Aeromonas</i>	59	0.0%
<i>Vibrio</i>	542	0.0%
<i>Yersinia enterocolitica</i>	556	0.0%
<i>Entamoeba histolytica</i>	518	0.0%

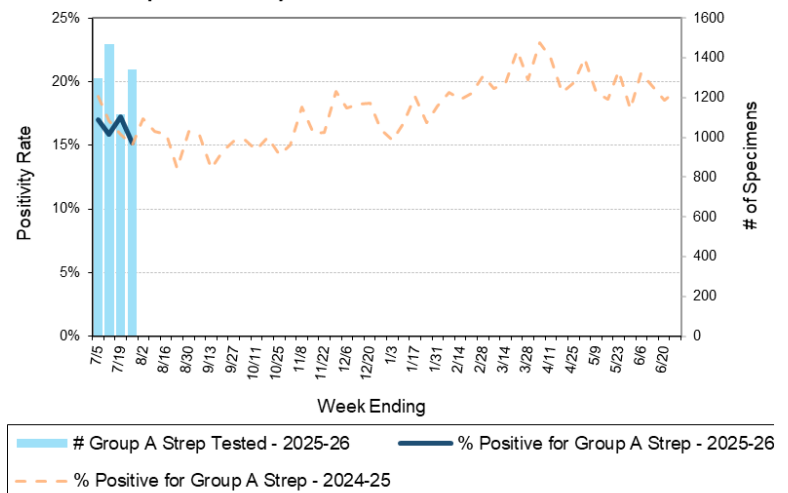
\*\*\*BioMerieux has announced an increased risk of false positive norovirus results with the BioFire FilmArray GI panel, which may increase the statewide norovirus percent positivity \*\*

## Respiratory Pathogens

Week Ending 7/26/25

	# Tested	% Positive
Rhinovirus/Enterovirus	836	12.3%
SARS-CoV-2	3564	4.8%
Parainfluenza	661	3.8%
Adenovirus	655	1.5%
Human metapneumovirus	682	1.2%
<i>Bordetella pertussis</i>	436	0.5%
Influenza	3026	0.3%
RSV	2867	0.2%
Seasonal coronaviruses	585	0.0%

Number Tested and Positivity Rate for Group A *Streptococcus* by PCR at Wisconsin Laboratories



## Additional Information

- Additional Information on avian influenza testing and influenza surveillance at WSLH: <https://www.slh.wisc.edu/clinical/diseases/h5n1-highly-pathogenic-avian-influenza-update/>
- Additional information on respiratory pathogens can be found on the DHS website: <https://www.dhs.wisconsin.gov/disease/respiratory.htm>
- Activity graphs for a variety of respiratory pathogens can be found on the DHS Respiratory Illness Dashboard: <https://www.dhs.wisconsin.gov/disease/laboratory-based-data.htm>
- Activity graphs for a variety of gastrointestinal pathogens can be found on the WSLH website: <http://www.slh.wisc.edu/wcln-surveillance/surveillance/gastropathogen-surveillance/>

To subscribe to this report, email [WCLN@slh.wisc.edu](mailto:WCLN@slh.wisc.edu)