

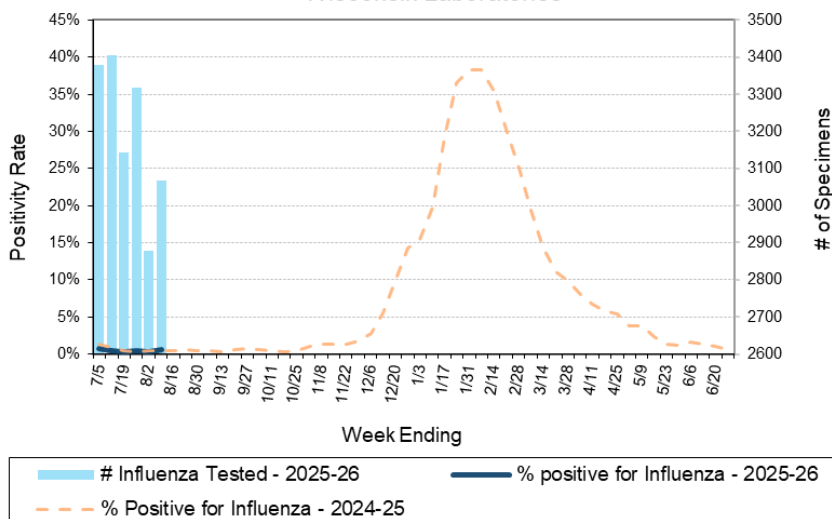
Laboratory Surveillance Report

**** For a selection of pathogens, participating Wisconsin clinical laboratories voluntarily report to WSLH on a weekly basis the total number of tests performed, and the number of those tests with positive results.**

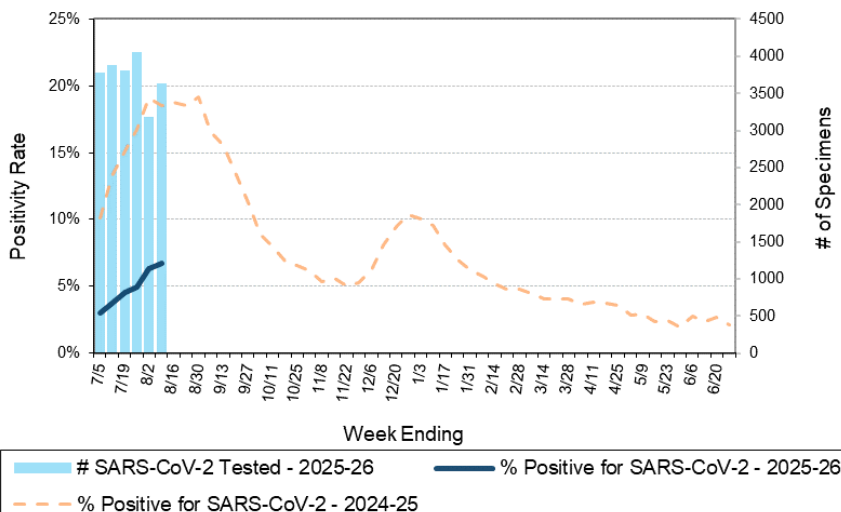
To Enhance Surveillance Activities, Please Send:

- **All Testing Sites:**
 - ◇ **ALL Influenza positive specimens:**
 - **Especially, Influenza A specimens:**
 - From patients admitted to the ICU
 - With swine, bovine or poultry exposure
 - With international travel history
 - That fail to subtype as H1 or H3 (Ct <35)
 - ◇ **Up to 5 SARS-CoV-2 positive specimens per week**
 - ◇ **All Enterovirus positive CSF specimens**

Number Tested and Positivity Rate for **Influenza** by PCR at Wisconsin Laboratories



Number Tested and Positivity Rate for **SARS-CoV-2** by PCR at Wisconsin Laboratories



Respiratory Snapshot:

- Influenza activity is **low** in Wisconsin (0.5%) and nationally (0.4%)
- Rhinovirus/Enterovirus (12.9%) activity is **high** in Wisconsin
- SARS-CoV-2 activity (6.7%) is **increasing** in Wisconsin

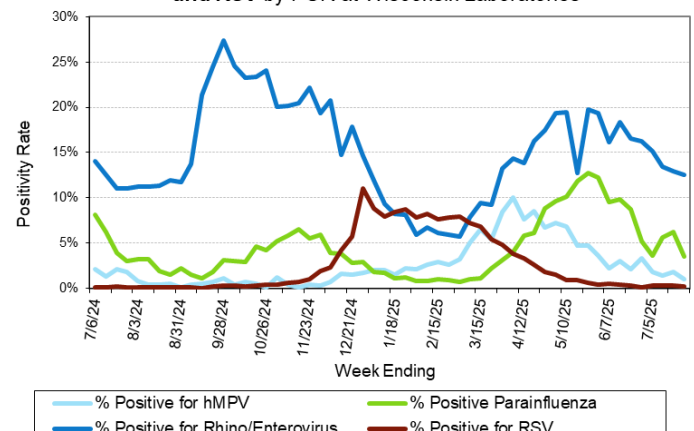
Enteric Snapshot:

- Norovirus (7.4%), *Campylobacter* (4.0%)
Cryptosporidium (2.8%) and *Salmonella* (2.3%) activities are **elevated** in Wisconsin

Other:

- Group A *Streptococcus* activity in Wisconsin is **high** (16.3%).

Positivity Rate of **hMPV, Parainfluenza, Rhino/Enterovirus and RSV** by PCR at Wisconsin Laboratories



Laboratory Surveillance Report

Enteric Pathogens

Week Ending 8/9/25

	# Tested	% Positive
Norovirus***	551	7.4%
<i>Campylobacter</i>	705	4.0%
<i>Cryptosporidium</i>	576	2.8%
<i>Salmonella</i>	705	2.3%
STEC	705	1.7%
<i>Shigella/EIEC</i>	705	1.3%
<i>Cyclospora</i>	529	0.9%
<i>Giardia</i>	576	0.9%
<i>E. coli</i> 0157	252	0.8%
Adenovirus 40/41	529	0.8%
<i>Yersinia enterocolitica</i>	602	0.7%
Rotavirus	567	0.7%
Astrovirus	529	0.6%
<i>Plesiomonas shigelloides</i>	565	0.4%
Sapovirus	529	0.4%
<i>Aeromonas</i>	58	0.0%
<i>Vibrio</i>	602	0.0%
<i>Entamoeba histolytica</i>	573	0.0%

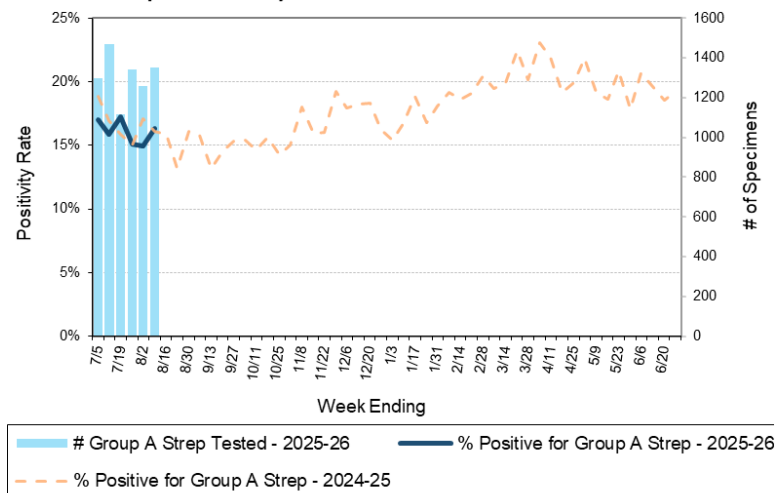
***BioMerieux has announced an increased risk of false positive norovirus results with the BioFire FilmArray GI panel, which may increase the statewide norovirus percent positivity **

Respiratory Pathogens

Week Ending 8/9/25

	# Tested	% Positive
Rhinovirus/Enterovirus	731	12.9%
SARS-CoV-2	3632	6.7%
Parainfluenza	538	2.0%
Adenovirus	554	0.7%
Seasonal coronaviruses	456	0.7%
<i>Bordetella pertussis</i>	468	0.6%
Human metapneumovirus	563	0.5%
Influenza	3067	0.5%
RSV	2860	0.2%

Number Tested and Positivity Rate for Group A *Streptococcus* by PCR at Wisconsin Laboratories



Additional Information

- Additional Information on avian influenza testing and influenza surveillance at WSLH:
<https://www.slh.wisc.edu/clinical/diseases/h5n1-highly-pathogenic-avian-influenza-update/>
- Additional information on respiratory pathogens can be found on the DHS website:
<https://www.dhs.wisconsin.gov/disease/respiratory.htm>
- Activity graphs for a variety of respiratory pathogens can be found on the DHS Respiratory Illness Dashboard:
<https://www.dhs.wisconsin.gov/disease/laboratory-based-data.htm>
- Activity graphs for a variety of gastrointestinal pathogens can be found on the WSLH website:
<http://www.slh.wisc.edu/wcln-surveillance/surveillance/gastropathogen-surveillance/>

To subscribe to this report, email WCLN@slh.wisc.edu