

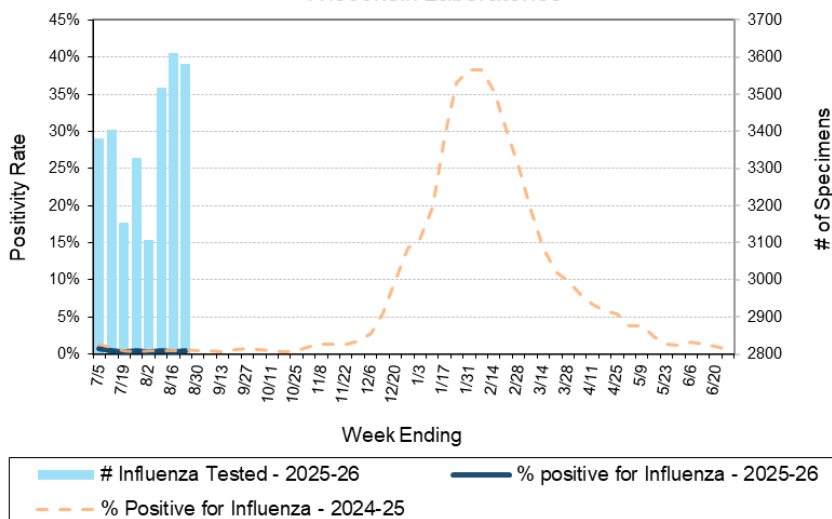
# Laboratory Surveillance Report

**\*\* For a selection of pathogens, participating Wisconsin clinical laboratories voluntarily report to WSLH on a weekly basis the total number of tests performed, and the number of those tests with positive results.**

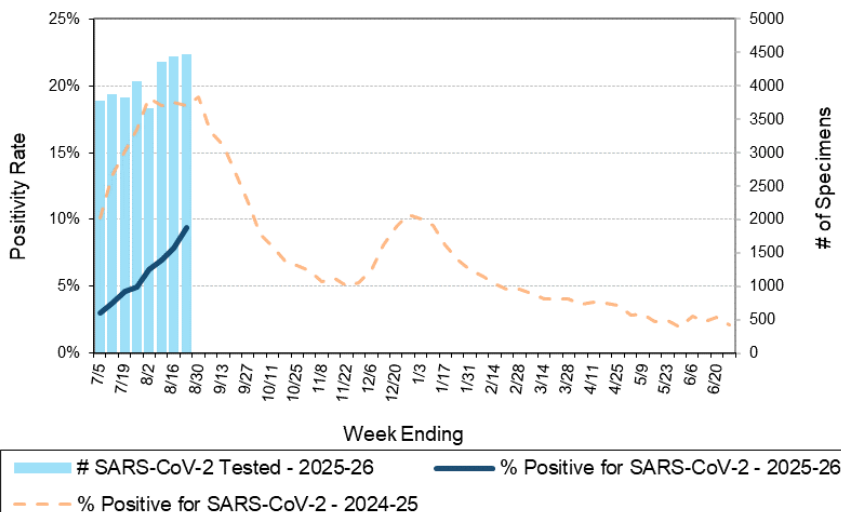
## To Enhance Surveillance Activities, Please Send:

- **All Testing Sites:**
  - ◇ **ALL Influenza positive specimens:**
    - **Especially, Influenza A specimens:**
      - From patients admitted to the ICU
      - With swine, bovine or poultry exposure
      - With international travel history
      - That fail to subtype as H1 or H3 (Ct <35)
  - ◇ **Up to 5 SARS-CoV-2 positive specimens per week**
  - ◇ **All Enterovirus positive CSF specimens**

Number Tested and Positivity Rate for **Influenza** by PCR at Wisconsin Laboratories



Number Tested and Positivity Rate for **SARS-CoV-2** by PCR at Wisconsin Laboratories



## Respiratory Snapshot:

- Influenza activity is **low** in Wisconsin (0.5%) and nationally (0.4%)
- Rhinovirus/Enterovirus (19.9%) activity is **high** in Wisconsin
- SARS-CoV-2 activity (9.4%) is **increasing** in Wisconsin

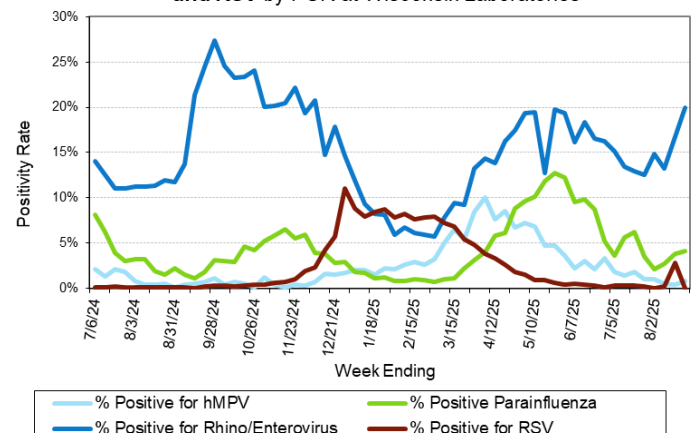
## Enteric Snapshot:

- Norovirus (8.1%), *Campylobacter* (4.2%) *Cryptosporidium* (1.9%) and *Salmonella* (2.1%) activities are **elevated** in Wisconsin

## Other:

- Group A *Streptococcus* activity in Wisconsin is **high** (16.0%).

Positivity Rate of **hMPV, Parainfluenza, Rhino/Enterovirus and RSV** by PCR at Wisconsin Laboratories



# Laboratory Surveillance Report

## Enteric Pathogens

Week Ending 8/23/25

	# Tested	% Positive
Norovirus***	492	8.1%
<i>Campylobacter</i>	568	4.2%
<i>Salmonella</i>	583	2.1%
<i>Cryptosporidium</i>	525	1.9%
<i>Giardia</i>	525	1.5%
STEC	568	1.4%
<i>Yersinia enterocolitica</i>	526	0.8%
Adenovirus 40/41	464	0.6%
<i>Shigella/EIEC</i>	568	0.4%
<i>Cyclospora</i>	464	0.4%
<i>E. coli</i> 0157	294	0.3%
<i>Vibrio</i>	529	0.2%
Rotavirus	498	0.2%
Sapovirus	464	0.2%
<i>Aeromonas</i>	88	0.0%
<i>Plesiomonas shigelloides</i>	495	0.0%
Astrovirus	464	0.0%
<i>Entamoeba histolytica</i>	525	0.0%

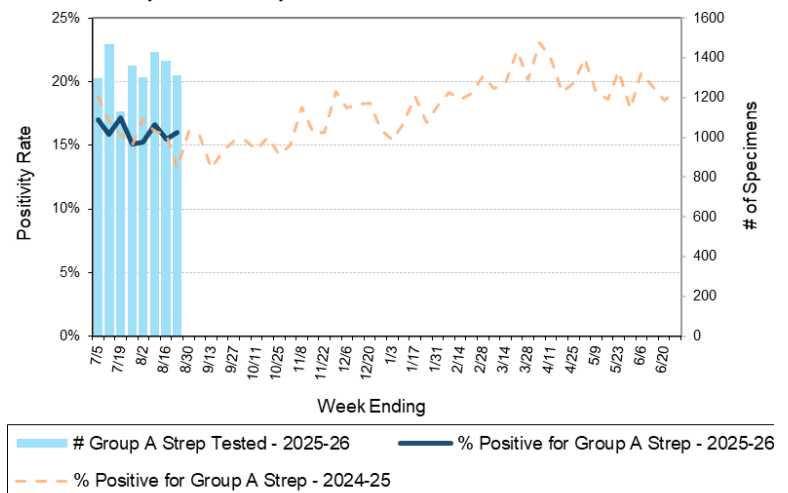
\*\*\*BioMerieux has announced an increased risk of false positive norovirus results with the BioFire FilmArray GI panel, which may increase the statewide norovirus percent positivity \*\*

## Respiratory Pathogens

Week Ending 8/23/25

	# Tested	% Positive
Rhinovirus/Enterovirus	973	19.9% ↑
SARS-CoV-2	4479	9.4% ↑
Parainfluenza	696	4.2%
Adenovirus	620	1.1%
Seasonal coronaviruses	631	1.0%
Human metapneumovirus	630	0.8%
Influenza	3581	0.5%
<i>Bordetella pertussis</i>	451	0.4%
RSV	3339	0.0%

Number Tested and Positivity Rate for **Group A Streptococcus** by PCR at Wisconsin Laboratories



## Additional Information

- Additional Information on avian influenza testing and influenza surveillance at WSLH: <https://www.slh.wisc.edu/clinical/diseases/h5n1-highly-pathogenic-avian-influenza-update/>
- Additional information on respiratory pathogens can be found on the DHS website: <https://www.dhs.wisconsin.gov/disease/respiratory.htm>
- Activity graphs for a variety of respiratory pathogens can be found on the DHS Respiratory Illness Dashboard: <https://www.dhs.wisconsin.gov/disease/laboratory-based-data.htm>
- Activity graphs for a variety of gastrointestinal pathogens can be found on the WSLH website: <http://www.slh.wisc.edu/wcln-surveillance/surveillance/gastropathogen-surveillance/>

To subscribe to this report, email [WCLN@slh.wisc.edu](mailto:WCLN@slh.wisc.edu)