

# Laboratory Surveillance Report

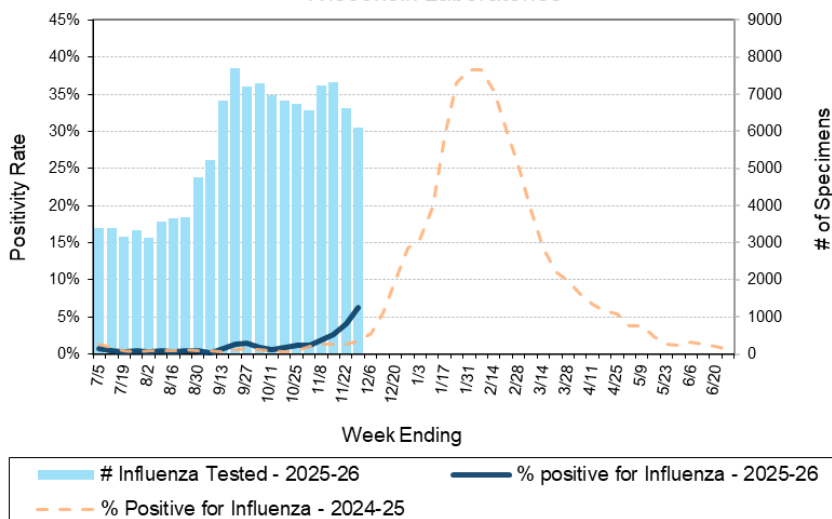
\*\* For a selection of pathogens, participating Wisconsin clinical laboratories voluntarily report to WSLH on a weekly basis the total number of tests performed, and the number of those tests with positive results.

## To Enhance Surveillance Activities, Please Send:

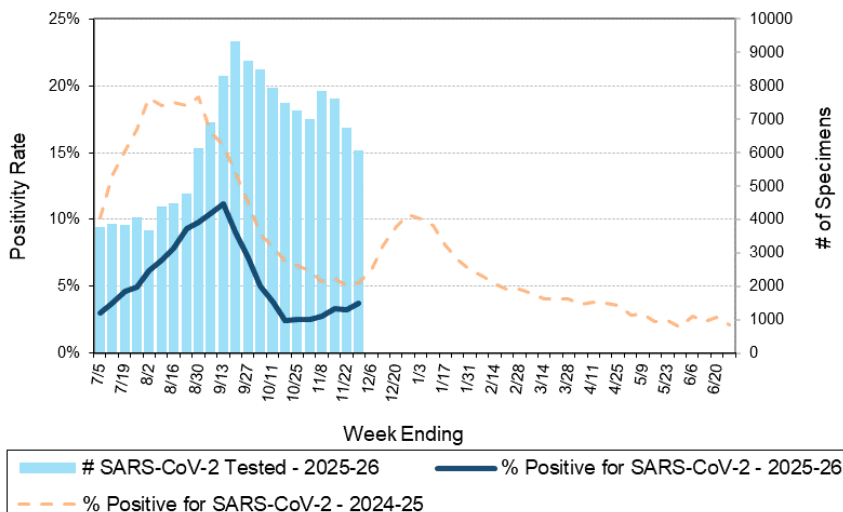
- All Testing Sites:
  - ◇ **Two influenza-related hospitalizations per week**
  - ◇ **ALL Influenza A positive specimens:**
    - From patients admitted to the ICU
    - With swine, bovine or poultry exposure
    - With international travel history
    - That fail to subtype as H1 or H3 (Ct <35)
  - ◇ **Up to 5 SARS-CoV-2 positive specimens per week**
  - ◇ **All Enterovirus positive CSF specimens**

**NEW**

Number Tested and Positivity Rate for Influenza by PCR at Wisconsin Laboratories



Number Tested and Positivity Rate for SARS-CoV-2 by PCR at Wisconsin Laboratories



## Respiratory Snapshot:

- Influenza activity is **increasing** in Wisconsin (6.3%).
- Rhinovirus/Enterovirus (16.3%) activity is **decreasing** in Wisconsin.
- Parainfluenza activity (6.1%) is moderate in Wisconsin.

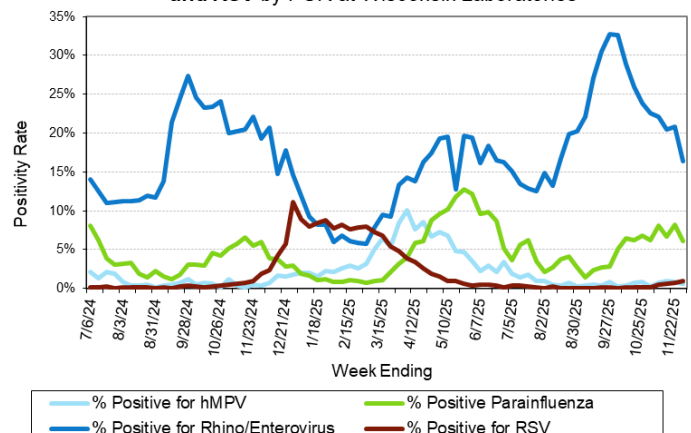
## Enteric Snapshot:

- Norovirus (12.9%), *Campylobacter* (2.3%) activities are **elevated** in Wisconsin.

## Other:

- Group A *Streptococcus* activity in Wisconsin is **moderate** (18.1%).

Positivity Rate of hMPV, Parainfluenza, Rhino/Enterovirus and RSV by PCR at Wisconsin Laboratories



# Laboratory Surveillance Report

## Enteric Pathogens

Week Ending 11/1/25

	# Tested	% Positive
Norovirus***	395	12.9%
<i>Campylobacter</i>	527	2.3%
Adenovirus 40/41	392	1.8%
Sapovirus	392	1.3%
STEC	527	0.9%
<i>Giardia</i>	462	0.9%
<i>E. coli</i> 0157	210	0.5%
Astrovirus	392	0.5%
Rotavirus	444	0.5%
<i>Salmonella</i>	527	0.4%
<i>Yersinia enterocolitica</i>	469	0.4%
<i>Cryptosporidium</i>	462	0.4%
<i>Shigella</i> /EIEC	527	0.2%
<i>Vibrio</i>	434	0.2%
<i>Aeromonas</i>	44	0.0%
<i>Plesiomonas shigelloides</i>	417	0.0%
<i>Cyclospora</i>	392	0.0%
<i>Entamoeba histolytica</i>	462	0.0%

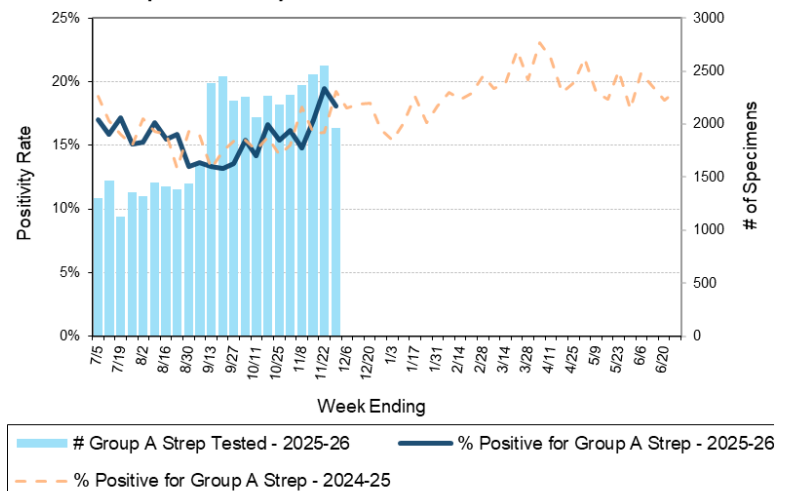
\*\*\*BioMerieux has announced an increased risk of false positive norovirus results with the BioFire FilmArray GI panel, which may increase the statewide norovirus percent positivity \*\*

## Respiratory Pathogens

Week Ending 11/1/25

	# Tested	% Positive
Rhinovirus/Enterovirus	1237	16.3%
Influenza	611	6.3% ↑
Parainfluenza	852	6.1%
SARS-CoV-2	6073	3.7%
Adenovirus	815	1.8%
Seasonal coronaviruses	713	1.0%
RSV	5579	1.0%
Human metapneumovirus	815	0.6%
<i>Bordetella pertussis</i>	614	0.0%

Number Tested and Positivity Rate for Group A *Streptococcus* by PCR at Wisconsin Laboratories



## Additional Information

- Additional Information on avian influenza testing and influenza surveillance at WSLH: <https://www.slh.wisc.edu/clinical/diseases/h5n1-highly-pathogenic-avian-influenza-update/>
- Additional information on respiratory pathogens can be found on the DHS website: <https://www.dhs.wisconsin.gov/disease/respiratory.htm>
- Activity graphs for a variety of respiratory pathogens can be found on the DHS Respiratory Illness Dashboard: <https://www.dhs.wisconsin.gov/disease/laboratory-based-data.htm>
- Activity graphs for a variety of gastrointestinal pathogens can be found on the WSLH website: <http://www.slh.wisc.edu/wcln-surveillance/surveillance/gastropathogen-surveillance/>

To subscribe to this report, email [WCLN@slh.wisc.edu](mailto:WCLN@slh.wisc.edu)