

# Laboratory Surveillance Report

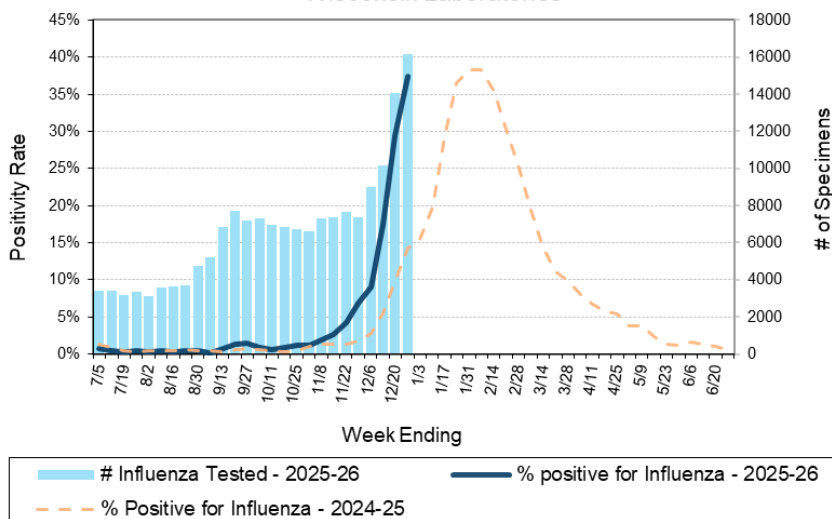
**\*\* For a selection of pathogens, participating Wisconsin clinical laboratories voluntarily report to WSLH on a weekly basis the total number of tests performed, and the number of those tests with positive results.**

## To Enhance Surveillance Activities, Please Send:

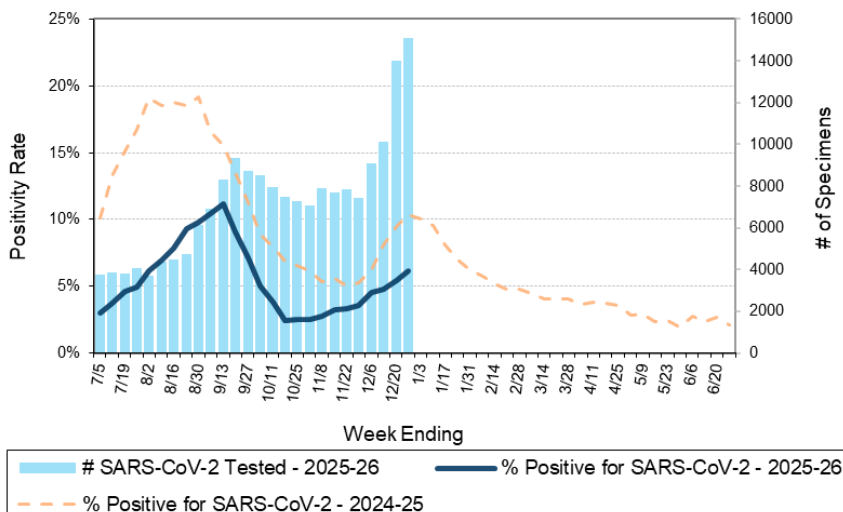
- **All Testing Sites:**
  - ◇ **Two influenza-related hospitalizations per week**
  - ◇ **ALL Influenza A positive specimens:**
    - **From patients admitted to the ICU**
    - **With swine, bovine or poultry exposure**
    - **With international travel history**
    - **That fail to subtype as H1 or H3 (Ct <35)**
  - ◇ **Up to 5 SARS-CoV-2 positive specimens per week**
  - ◇ **All Enterovirus positive CSF specimens**

**NEW**

Number Tested and Positivity Rate for **Influenza** by PCR at Wisconsin Laboratories



Number Tested and Positivity Rate for **SARS-CoV-2** by PCR at Wisconsin Laboratories



## **Respiratory Snapshot:**

- Influenza activity is **High** in Wisconsin (37.4%) and nationally (32.9%)

### Nationally:

- **Influenza A** is the dominant type circulating (93%).
- **Influenza A(H3N2)** is the predominant subtype circulating (91%).
- **Influenza A(H3N2)** specimens genetically characterized this season are predominantly **HA Subclade K** (90%).
- **Rhinovirus/Enterovirus** (12.3%) and **SARS-CoV-2** (6.1%) activities are moderate in Wisconsin.

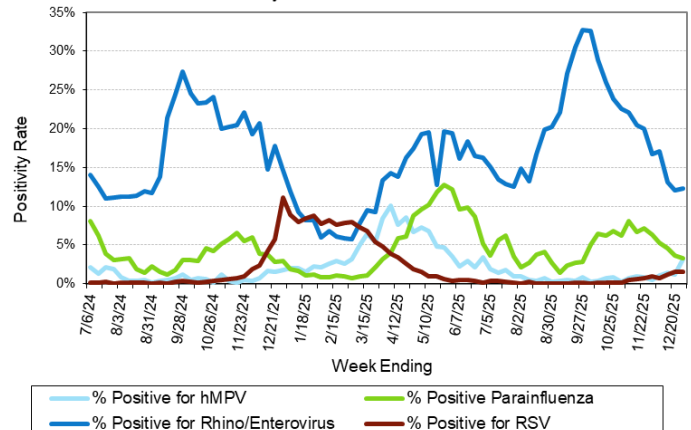
## **Enteric Snapshot:**

- **Norovirus** (13.9%), **Campylobacter** (2.7%) and **sapovirus** (2.4%) activities are **elevated** in Wisconsin.

## **Other:**

- **Group A Streptococcus** activity in Wisconsin is **moderate** (17.3%).

Positivity Rate of **hMPV, Parainfluenza, Rhino/Enterovirus and RSV** by PCR at Wisconsin Laboratories



# Laboratory Surveillance Report

## Enteric Pathogens

Week Ending 12/27/25

	# Tested	% Positive
Norovirus***	288	13.9%
<i>Campylobacter</i>	376	2.7%
Sapovirus	330	2.4%
STEC	376	1.9%
Rotavirus	347	1.7%
Astrovirus	330	1.5%
<i>Salmonella</i>	376	1.3%
Adenovirus 40/41	330	0.9%
<i>Cryptosporidium</i>	364	0.8%
<i>E. coli</i> 0157	209	0.5%
<i>Yersinia enterocolitica</i>	376	0.5%
<i>Giardia</i>	364	0.5%
<i>Shigella</i> /EIEC	376	0.3%
<i>Vibrio</i>	376	0.3%
<i>Aeromonas</i>	48	0.0%
<i>Plesiomonas shigelloides</i>	359	0.0%
<i>Cyclospora</i>	330	0.0%
<i>Entamoeba histolytica</i>	364	0.0%

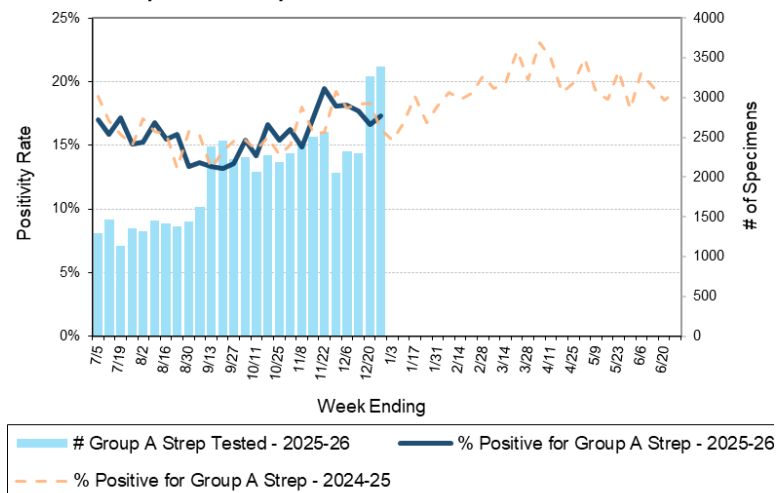
\*\*\*BioMerieux has announced an increased risk of false positive norovirus results with the BioFire FilmArray GI panel, which may increase the statewide norovirus percent positivity \*\*

## Respiratory Pathogens

Week Ending 12/27/25

	# Tested	% Positive
Influenza	16174	37.4%
Rhinovirus/Enterovirus	1874	12.3%
SARS-CoV-2	15112	6.1%
Parainfluenza	1133	3.3%
Human metapneumovirus	1133	3.2%
Seasonal coronaviruses	1029	2.2%
Adenovirus	1137	1.7%
RSV	13408	1.5%
<i>Bordetella pertussis</i>	595	0.0%

Number Tested and Positivity Rate for **Group A Streptococcus** by PCR at Wisconsin Laboratories



## Additional Information

- Additional Information on avian influenza testing and influenza surveillance at WSLH: <https://www.slh.wisc.edu/clinical/diseases/h5n1-highly-pathogenic-avian-influenza-update/>
- Additional information on respiratory pathogens can be found on the DHS website: <https://www.dhs.wisconsin.gov/disease/respiratory.htm>
- Activity graphs for a variety of respiratory pathogens can be found on the DHS Respiratory Illness Dashboard: <https://www.dhs.wisconsin.gov/disease/laboratory-based-data.htm>
- Activity graphs for a variety of gastrointestinal pathogens can be found on the WSLH website: <http://www.slh.wisc.edu/wcln-surveillance/surveillance/gastropathogen-surveillance/>

To subscribe to this report, email [WCLN@slh.wisc.edu](mailto:WCLN@slh.wisc.edu)