

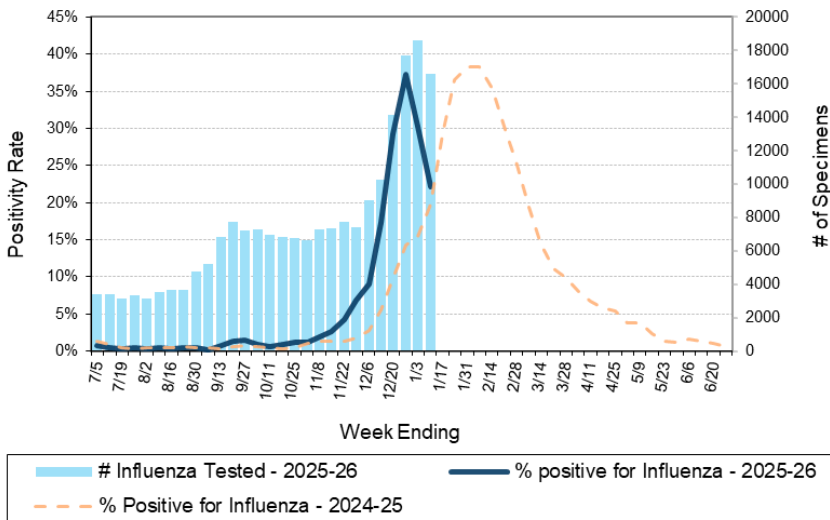
Laboratory Surveillance Report

**** For a selection of pathogens, participating Wisconsin clinical laboratories voluntarily report to WSLH on a weekly basis the total number of tests performed, and the number of those tests with positive results.**

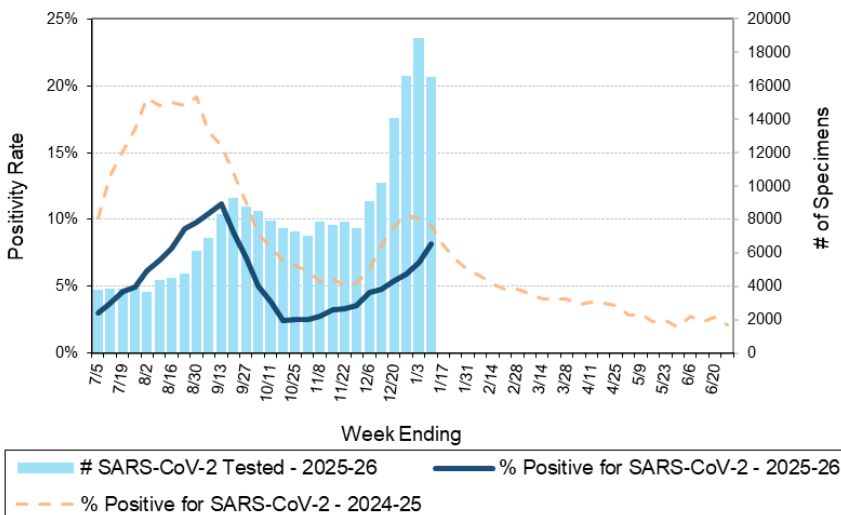
To Enhance Surveillance Activities, Please Send:

- **All Testing Sites:**
 - ◇ **Two influenza-related hospitalizations per week**
 - ◇ **ALL Influenza A positive specimens:**
 - **From patients admitted to the ICU**
 - **With swine, bovine or poultry exposure**
 - **With international travel history**
 - **That fail to subtype as H1 or H3 (Ct <35)**
 - ◇ **Up to 5 SARS-CoV-2 positive specimens per week**
 - ◇ **All Enterovirus positive CSF specimens**

Number Tested and Positivity Rate for **Influenza** by PCR at Wisconsin Laboratories



Number Tested and Positivity Rate for **SARS-CoV-2** by PCR at Wisconsin Laboratories



Respiratory Snapshot:

- Influenza activity is **decreasing** in Wisconsin (22.1%) and nationally (18.6%)
- Nationally:**
 - **Influenza A** is the dominant type circulating (93%).
 - **Influenza A(H3N2)** is the predominant subtype circulating (90%).
 - **Influenza A(H3N2)** specimens genetically characterized this season are predominantly **HA Subclade K** (91%).
- Rhinovirus/Enterovirus (9.1%) and SARS-CoV-2 (8.2%) activities are moderate in Wisconsin.

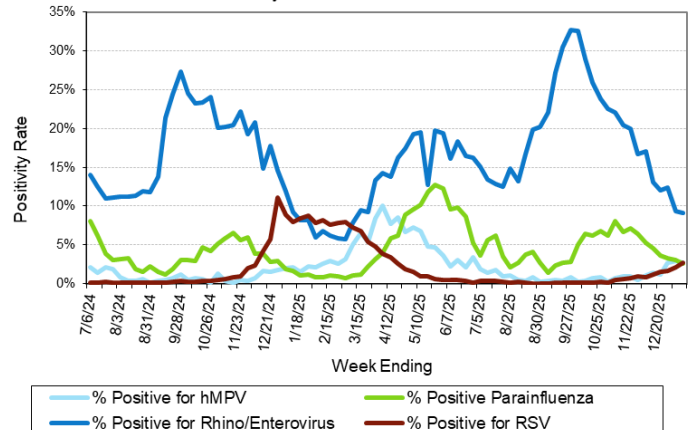
Enteric Snapshot:

- Norovirus (12.2%), sapovirus (2.5%) and adenovirus 40/41 (2.2%) activities are **elevated** in Wisconsin.

Other:

- Group A *Streptococcus* activity in Wisconsin is **moderate** (17.6%).

Positivity Rate of **hMPV, Parainfluenza, Rhino/Enterovirus and RSV** by PCR at Wisconsin Laboratories



Laboratory Surveillance Report

Enteric Pathogens

Week Ending 1/10/26

	# Tested	% Positive
Norovirus***	629	12.2%
Sapovirus	551	2.5%
Adenovirus 40/41	551	2.2%
<i>Campylobacter</i>	717	1.5%
Rotavirus	626	1.4%
<i>Yersinia enterocolitica</i>	659	0.9%
<i>Giardia</i>	645	0.9%
<i>Salmonella</i>	714	0.7%
STEC	700	0.7%
Astrovirus	551	0.7%
<i>Plesiomonas shigelloides</i>	584	0.2%
<i>Vibrio</i>	616	0.2%
<i>Cryptosporidium</i>	645	0.2%
<i>Entamoeba histolytica</i>	645	0.2%
<i>Shigella/EIEC</i>	700	0.1%
<i>Aeromonas</i>	52	0.0%
<i>E. coli</i> 0157	299	0.0%
<i>Cyclospora</i>	551	0.0%

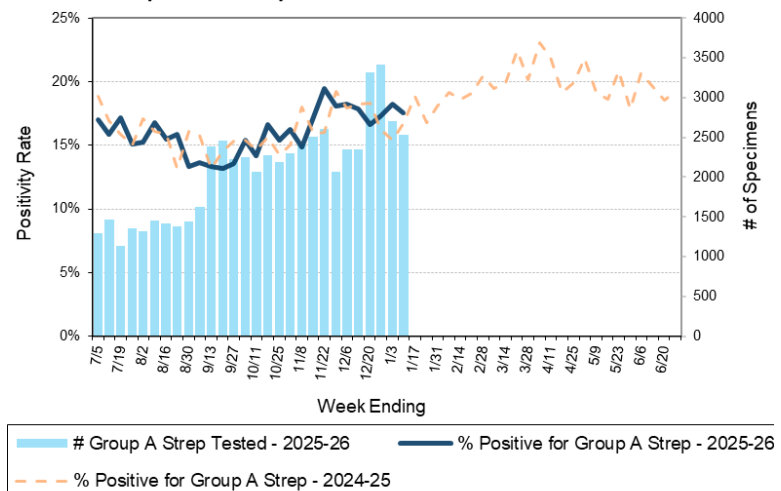
***BioMerieux has announced an increased risk of false positive norovirus results with the BioFire FilmArray GI panel, which may increase the statewide norovirus percent positivity **

Respiratory Pathogens

Week Ending 1/10/26

	# Tested	% Positive
Influenza	16626	22.1%
Rhinovirus/Enterovirus	2236	9.1%
SARS-CoV-2	16555	8.2%
Seasonal coronaviruses	1269	4.4%
Human metapneumovirus	1447	2.7%
RSV	13883	2.7%
Parainfluenza	1260	2.5%
Adenovirus	1400	1.5%
<i>Bordetella pertussis</i>	916	0.2%

Number Tested and Positivity Rate for Group A *Streptococcus* by PCR at Wisconsin Laboratories



Additional Information

- Additional Information on avian influenza testing and influenza surveillance at WSLH: <https://www.slh.wisc.edu/clinical/diseases/h5n1-highly-pathogenic-avian-influenza-update/>
- Additional information on respiratory pathogens can be found on the DHS website: <https://www.dhs.wisconsin.gov/disease/respiratory.htm>
- Activity graphs for a variety of respiratory pathogens can be found on the DHS Respiratory Illness Dashboard: <https://www.dhs.wisconsin.gov/disease/laboratory-based-data.htm>
- Activity graphs for a variety of gastrointestinal pathogens can be found on the WSLH website: <http://www.slh.wisc.edu/wcln-surveillance/surveillance/gastropathogen-surveillance/>

To subscribe to this report, email WCLN@slh.wisc.edu