

Laboratory Surveillance Report

** For a selection of pathogens, participating Wisconsin clinical laboratories voluntarily report to WSLH on a weekly basis the total number of tests performed, and the number of those tests with positive results.

To Enhance Surveillance Activities, Please Send:

- **All Testing Sites:**
 - ◇ **Two influenza-related hospitalizations per week**
 - ◇ **ALL Influenza A positive specimens:**
 - From patients admitted to the ICU
 - With swine, bovine or poultry exposure
 - With international travel history
 - That fail to subtype as H1 or H3 (Ct <35)
 - ◇ **Up to 5 SARS-CoV-2 positive specimens per week**
 - ◇ **All Enterovirus positive CSF specimens**

Respiratory Snapshot:

- Influenza activity is **elevated** in Wisconsin (19.7%) and nationally (15.3%)
 - Nationally, **Influenza B** is the dominant type circulating (73%).
- Seasonal Coronaviruses (13.6%), RSV (10.1%), and Rhinovirus/Enterovirus (8.0%) activities are moderate in Wisconsin.

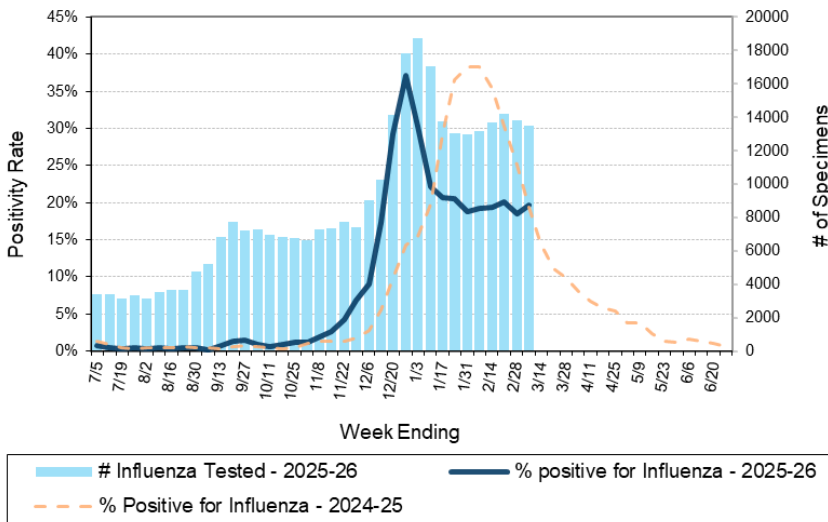
Enteric Snapshot:

- Norovirus (17.6%), activity is **elevated** in Wisconsin.

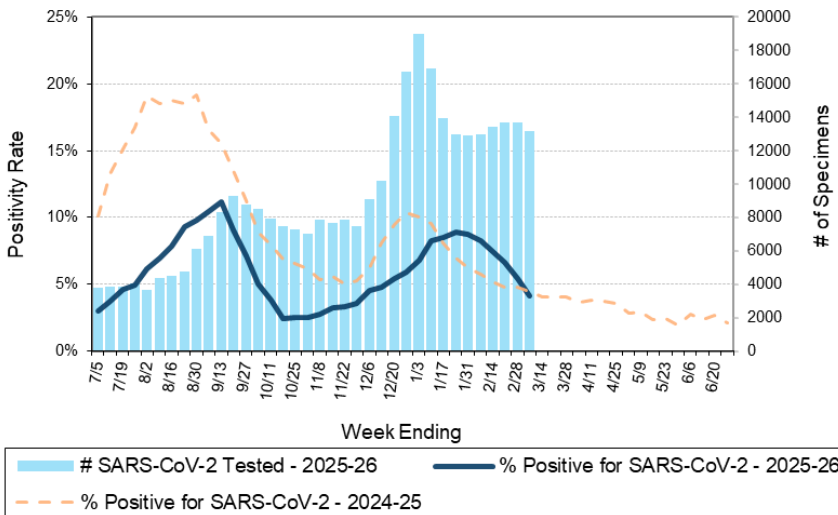
Other:

- Group A *Streptococcus* activity in Wisconsin is **moderate** (23.2%).

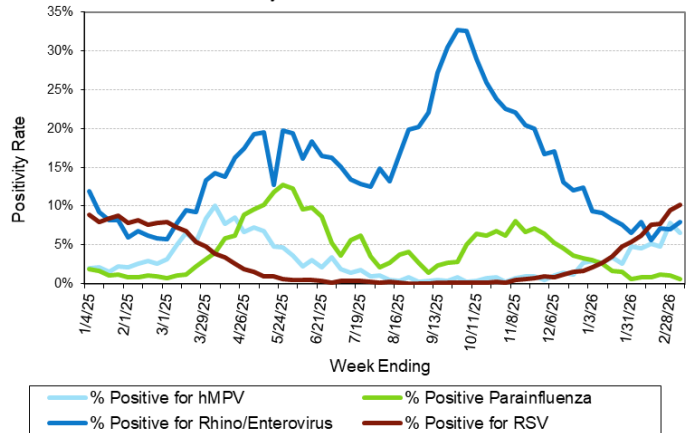
Number Tested and Positivity Rate for Influenza by PCR at Wisconsin Laboratories



Number Tested and Positivity Rate for SARS-CoV-2 by PCR at Wisconsin Laboratories



Positivity Rate of hMPV, Parainfluenza, Rhino/Enterovirus and RSV by PCR at Wisconsin Laboratories





34th Annual

Wisconsin Virology Conference

Thursday, May 28th

Registration Open!

CLICK HERE

OR


Laboratory Surveillance Report

Enteric Pathogens

Week Ending 3/7/26

	# Tested	% Positive
Norovirus***	551	17.6%
Rotavirus	570	3.9%
<i>Campylobacter</i>	641	2.5%
Astrovirus	466	1.9%
<i>Salmonella</i>	641	1.7%
Sapovirus	466	1.7%
STEC	641	0.5%
<i>Giardia</i>	565	0.5%
Adenovirus 40/41	466	0.4%
<i>Cryptosporidium</i>	565	0.4%
<i>Plesiomonas shigelloides</i>	515	0.2%
<i>Vibrio</i>	550	0.2%
<i>Yersinia enterocolitica</i>	599	0.2%
<i>Cyclospora</i>	486	0.2%
<i>Aeromonas</i>	59	0.0%
<i>E. coli</i> 0157	270	0.0%
<i>Shigella</i> /EIEC	641	0.0%
<i>Entamoeba histolytica</i>	565	0.0%

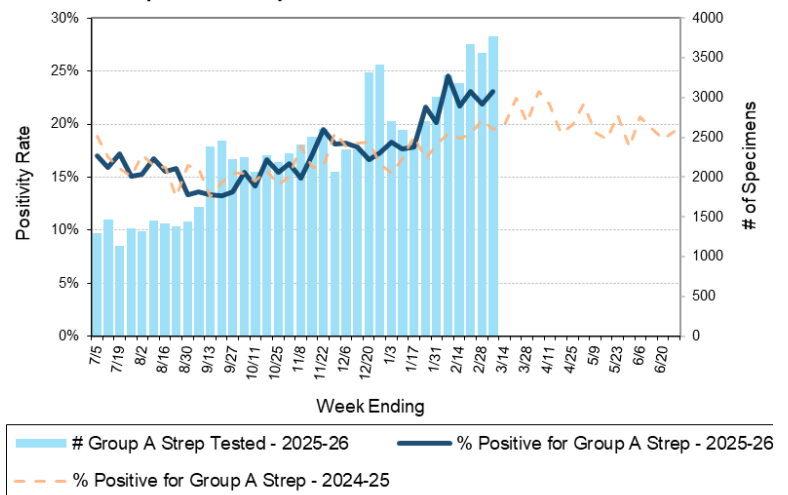
***BioMerieux has announced an increased risk of false positive norovirus results with the BioFire FilmArray GI panel, which may increase the statewide norovirus percent positivity **

Respiratory Pathogens

Week Ending 3/7/26

	# Tested	% Positive
Influenza	13468	19.7%
Seasonal coronaviruses	1053	13.6%
RSV	11978	10.1%
Rhinovirus/Enterovirus	1760	8.0%
Human metapneumovirus	1227	6.5%
SARS-CoV-2	13190	4.1%
Adenovirus	1077	1.5%
Parainfluenza	1080	0.6%
<i>Bordetella pertussis</i>	738	0.1%

Number Tested and Positivity Rate for Group A *Streptococcus* by PCR at Wisconsin Laboratories



Additional Information

- Additional Information on avian influenza testing and influenza surveillance at WSLH: <https://www.slh.wisc.edu/clinical/diseases/h5n1-highly-pathogenic-avian-influenza-update/>
- Additional information on respiratory pathogens can be found on the DHS website: <https://www.dhs.wisconsin.gov/disease/respiratory.htm>
- Activity graphs for a variety of respiratory pathogens can be found on the DHS Respiratory Illness Dashboard: <https://www.dhs.wisconsin.gov/disease/laboratory-based-data.htm>
- Activity graphs for a variety of gastrointestinal pathogens can be found on the WSLH website: <http://www.slh.wisc.edu/wcln-surveillance/surveillance/gastropathogen-surveillance/>

To subscribe to this report, email WCLN@slh.wisc.edu