

Laboratory Surveillance Report

** For a selection of pathogens, participating Wisconsin clinical laboratories voluntarily report to WSLH on a weekly basis the total number of tests performed, and the number of those tests with positive results.

To Enhance Surveillance Activities, Please Send:

- **All Testing Sites:**
 - ◇ **Two influenza-related hospitalizations per week**
 - ◇ **ALL Influenza A positive specimens:**
 - From patients admitted to the ICU
 - With swine, bovine or poultry exposure
 - With international travel history
 - That fail to subtype as H1 or H3 (Ct <35)
 - ◇ **Up to 5 SARS-CoV-2 positive specimens per week**
 - ◇ **All Enterovirus positive CSF specimens**

Respiratory Snapshot:

- Influenza activity is **elevated** in Wisconsin (15.8%) and nationally (11.5%)
 - Nationally, **Influenza B** is the dominant type circulating (83%).
- RSV (9.1%), hMPV (8.9%), Seasonal Coronaviruses (7.3%) and Rhinovirus/Enterovirus (7.2%) activities are moderate in Wisconsin.

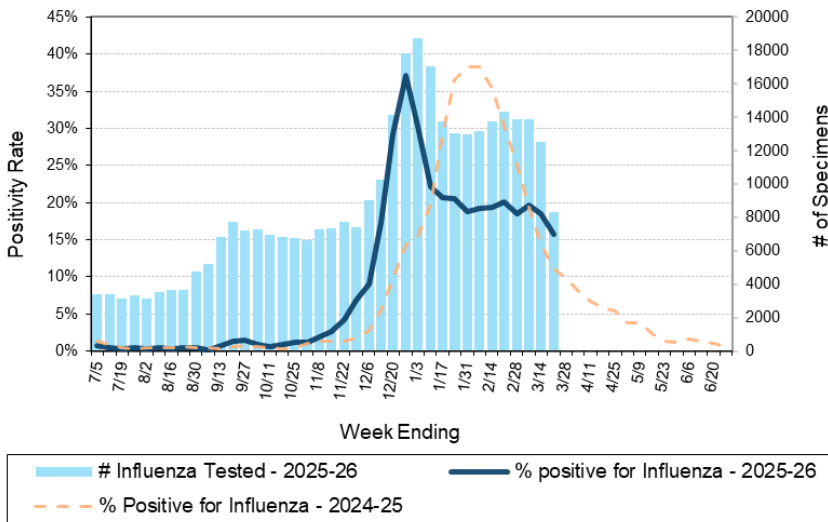
Enteric Snapshot:

- Norovirus (17.6%), activity is **elevated** in Wisconsin.

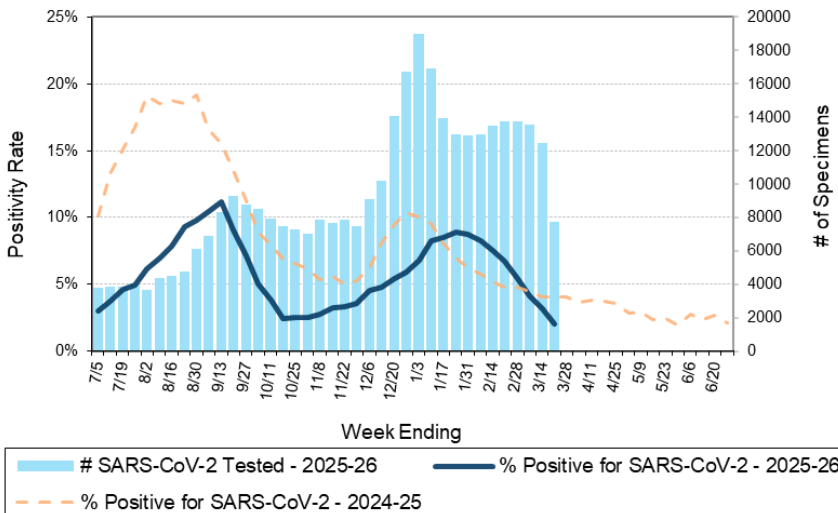
Other:

- Group A *Streptococcus* activity in Wisconsin is **moderate** (23.2%).

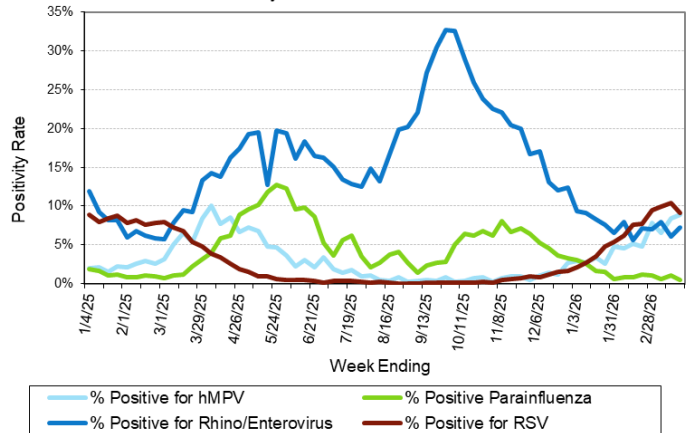
Number Tested and Positivity Rate for Influenza by PCR at Wisconsin Laboratories



Number Tested and Positivity Rate for SARS-CoV-2 by PCR at Wisconsin Laboratories



Positivity Rate of hMPV, Parainfluenza, Rhino/Enterovirus and RSV by PCR at Wisconsin Laboratories





34th Annual

Wisconsin Virology Conference

Thursday, May 28th

Registration Open!

CLICK HERE

OR


Laboratory Surveillance Report

Enteric Pathogens

Week Ending 3/21/26

	# Tested	% Positive
Norovirus***	411	16.8%
Rotavirus	416	5.3%
Astrovirus	392	3.6%
Sapovirus	392	2.6%
<i>Campylobacter</i>	455	2.0%
<i>Salmonella</i>	455	2.0%
<i>Giardia</i>	433	1.2%
STEC	439	0.5%
<i>Yersinia enterocolitica</i>	439	0.5%
<i>Shigella/EIEC</i>	455	0.4%
<i>Cryptosporidium</i>	433	0.2%
<i>Entamoeba histolytica</i>	433	0.2%
<i>Aeromonas</i>	53	0.0%
<i>E. coli</i> 0157	238	0.0%
<i>Plesiomonas shigelloides</i>	422	0.0%
<i>Vibrio</i>	439	0.0%
Adenovirus 40/41	392	0.0%
<i>Cyclospora</i>	392	0.0%

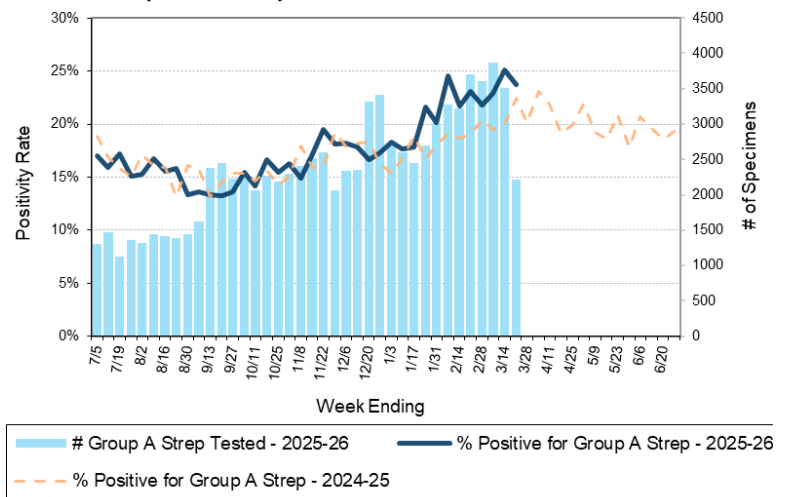
***BioMerieux has announced an increased risk of false positive norovirus results with the BioFire FilmArray GI panel, which may increase the statewide norovirus percent positivity **

Respiratory Pathogens

Week Ending 3/21/26

	# Tested	% Positive
Influenza	8336	15.8%
RSV	7271	9.1%
Human metapneumovirus	867	8.9%
Seasonal coronaviruses	762	7.3%
Rhinovirus/Enterovirus	1231	7.2%
SARS-CoV-2	7730	2.0%
Adenovirus	758	1.8%
Parainfluenza	769	0.5%
<i>Bordetella pertussis</i>	473	0.0%

Number Tested and Positivity Rate for Group A *Streptococcus* by PCR at Wisconsin Laboratories



Additional Information

- Additional Information on avian influenza testing and influenza surveillance at WSLH: <https://www.slh.wisc.edu/clinical/diseases/h5n1-highly-pathogenic-avian-influenza-update/>
- Additional information on respiratory pathogens can be found on the DHS website: <https://www.dhs.wisconsin.gov/disease/respiratory.htm>
- Activity graphs for a variety of respiratory pathogens can be found on the DHS Respiratory Illness Dashboard: <https://www.dhs.wisconsin.gov/disease/laboratory-based-data.htm>
- Activity graphs for a variety of gastrointestinal pathogens can be found on the WSLH website: <http://www.slh.wisc.edu/wcln-surveillance/surveillance/gastropathogen-surveillance/>

To subscribe to this report, email WCLN@slh.wisc.edu