

Laboratory Surveillance Report

** For a selection of pathogens, participating Wisconsin clinical laboratories voluntarily report to WSLH on a weekly basis the total number of tests performed, and the number of those tests with positive results.

To Enhance Surveillance Activities, Please Send:

- **All Testing Sites:**
 - ◇ **Two influenza-related hospitalizations per week**
 - ◇ **ALL Influenza A positive specimens:**
 - **From patients admitted to the ICU**
 - **With swine, bovine or poultry exposure**
 - With international travel history
 - That fail to subtype as H1 or H3 (Ct <35)
 - ◇ **Up to 5 SARS-CoV-2 positive specimens per week**
 - ◇ **All Enterovirus positive CSF specimens**

Respiratory Snapshot:

- Influenza activity is **elevated** in Wisconsin (11.3%) and nationally (8.2%)
 - Nationally, **Influenza B** is the dominant type circulating (84%).
- Rhinovirus/Enterovirus (11.5%), RSV (8.0%), hMPV (7.0%), and Seasonal Coronavirus (6.6%) activities are moderate in Wisconsin.

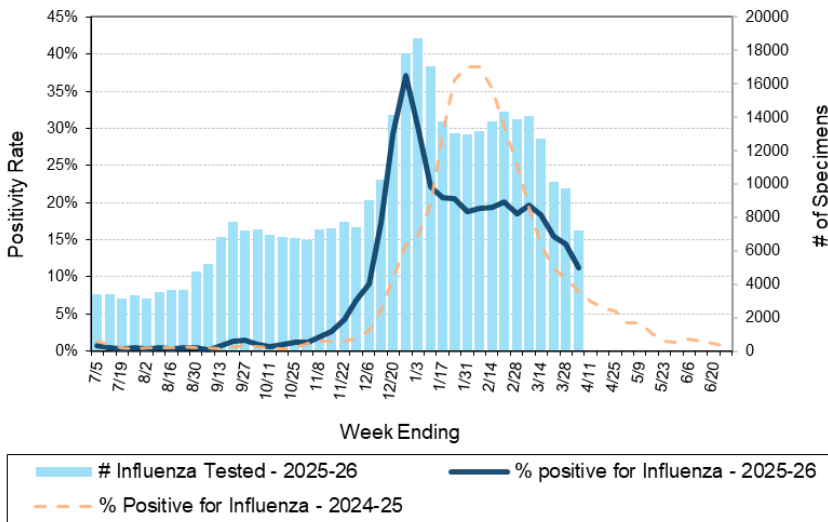
Enteric Snapshot:

- Norovirus (14.2%), rotavirus (8.3%) and *Campylobacter* (3.1%) activities are **elevated** in Wisconsin.

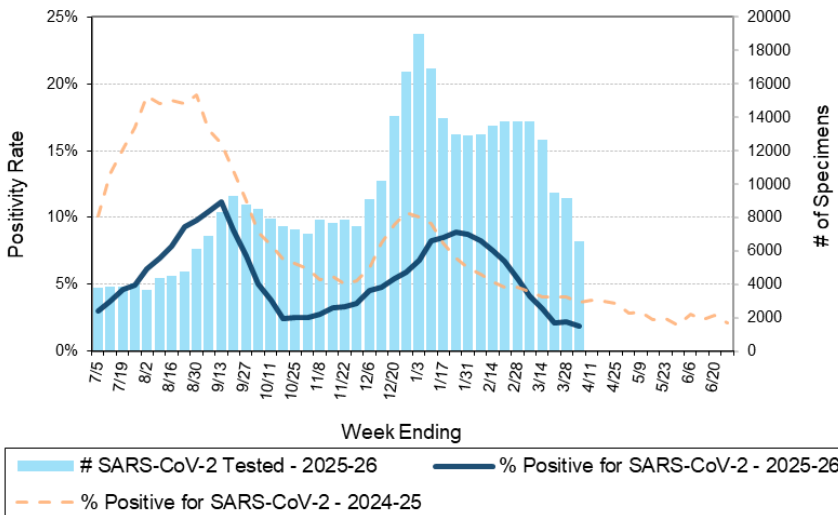
Other:

- Group A *Streptococcus* activity in Wisconsin is **moderate** (25.1%).

Number Tested and Positivity Rate for Influenza by PCR at Wisconsin Laboratories



Number Tested and Positivity Rate for SARS-CoV-2 by PCR at Wisconsin Laboratories



34th Annual
Wisconsin Virology Conference
Thursday, May 28th

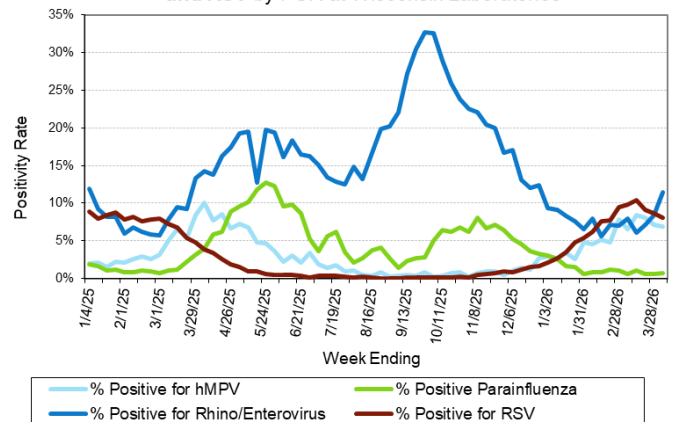
Registration Open!

[CLICK HERE](#)

OR



Positivity Rate of hMPV, Parainfluenza, Rhino/Enterovirus and RSV by PCR at Wisconsin Laboratories



Laboratory Surveillance Report

Enteric Pathogens

Week Ending 4/4/26

	# Tested	% Positive
Norovirus***	501	14.2%
Rotavirus	545	8.3%
<i>Campylobacter</i>	615	3.1%
Astrovirus	449	1.8%
Sapovirus	449	1.1%
<i>Salmonella</i>	608	1.0%
STEC	608	1.0%
<i>Yersinia enterocolitica</i>	562	0.7%
<i>Cryptosporidium</i>	549	0.7%
<i>E. coli</i> 0157	190	0.5%
Adenovirus 40/41	449	0.4%
<i>Giardia</i>	549	0.4%
<i>Vibrio</i>	509	0.2%
<i>Aeromonas</i>	34	0.0%
<i>Plesiomonas shigelloides</i>	485	0.0%
<i>Shigella</i> /EIEC	608	0.0%
<i>Cyclospora</i>	449	0.0%
<i>Entamoeba histolytica</i>	549	0.0%

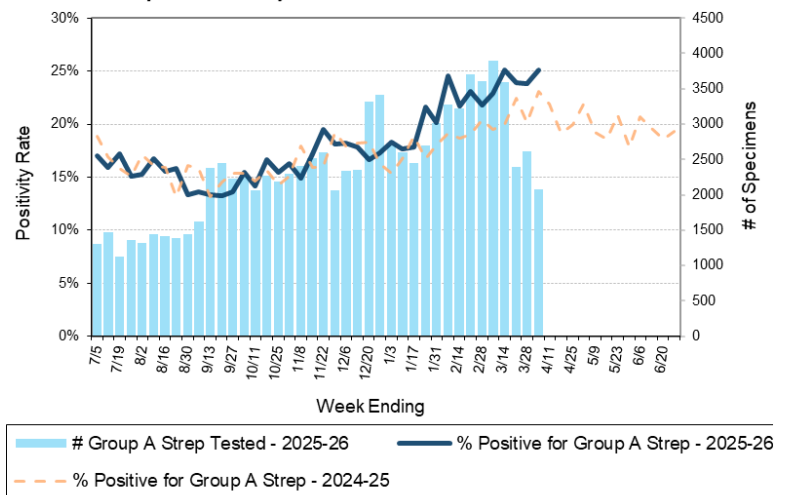
***BioMerieux has announced an increased risk of false positive norovirus results with the BioFire FilmArray GI panel, which may increase the statewide norovirus percent positivity **

Respiratory Pathogens

Week Ending 4/4/26

	# Tested	% Positive
Rhinovirus/Enterovirus	1238	11.5%
Influenza	7243	11.3%
RSV	6782	8.0%
Human metapneumovirus	834	7.0%
Seasonal coronaviruses	695	6.6%
Adenovirus	812	2.2%
SARS-CoV-2	6601	1.9%
Parainfluenza	698	0.7%
<i>Bordetella pertussis</i>	611	0.2%

Number Tested and Positivity Rate for Group A *Streptococcus* by PCR at Wisconsin Laboratories



Additional Information

- Additional Information on avian influenza testing and influenza surveillance at WSLH: <https://www.slh.wisc.edu/clinical/diseases/h5n1-highly-pathogenic-avian-influenza-update/>
- Additional information on respiratory pathogens can be found on the DHS website: <https://www.dhs.wisconsin.gov/disease/respiratory.htm>
- Activity graphs for a variety of respiratory pathogens can be found on the DHS Respiratory Illness Dashboard: <https://www.dhs.wisconsin.gov/disease/laboratory-based-data.htm>
- Activity graphs for a variety of gastrointestinal pathogens can be found on the WSLH website: <http://www.slh.wisc.edu/wcln-surveillance/surveillance/gastropathogen-surveillance/>

To subscribe to this report, email WCLN@slh.wisc.edu