

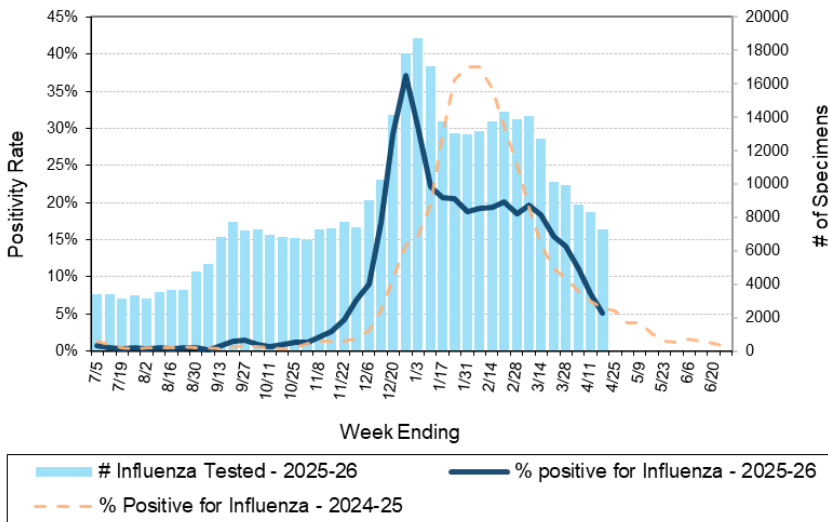
Laboratory Surveillance Report

** For a selection of pathogens, participating Wisconsin clinical laboratories voluntarily report to WSLH on a weekly basis the total number of tests performed, and the number of those tests with positive results.

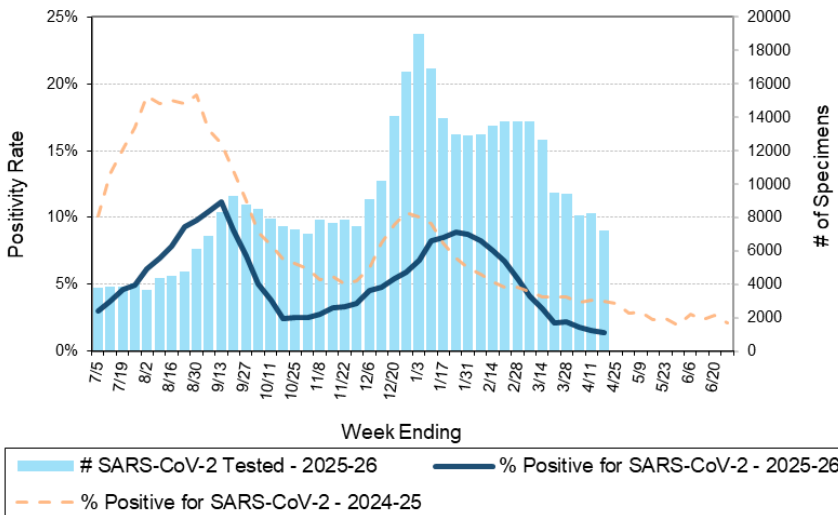
To Enhance Surveillance Activities, Please Send:

- **All Testing Sites:**
 - ◇ **Two influenza-related hospitalizations per week**
 - ◇ **ALL Influenza A positive specimens:**
 - From patients admitted to the ICU
 - With swine, bovine or poultry exposure
 - With international travel history
 - That fail to subtype as H1 or H3 (Ct <35)
 - ◇ **Up to 5 SARS-CoV-2 positive specimens per week**
 - ◇ **All Enterovirus positive CSF specimens**

Number Tested and Positivity Rate for Influenza by PCR at Wisconsin Laboratories



Number Tested and Positivity Rate for SARS-CoV-2 by PCR at Wisconsin Laboratories



Respiratory Snapshot:

- Influenza activity is **elevated** in Wisconsin (5.1%) and nationally (4.7%)
 - Nationally, **Influenza B** is the dominant type circulating (84%).
- Rhinovirus/Enterovirus (12.7%), hMPV (7.6%), RSV (5.8%), and Seasonal Coronavirus (4.9%) activities are moderate in Wisconsin.

Enteric Snapshot:

- Norovirus (10.9%), rotavirus (8.3%) activities are **elevated** in Wisconsin.

Other:

- Group A *Streptococcus* activity in Wisconsin is **moderate** (24.0%).

34th Annual

Wisconsin Virology Conference

Thursday, May 28th

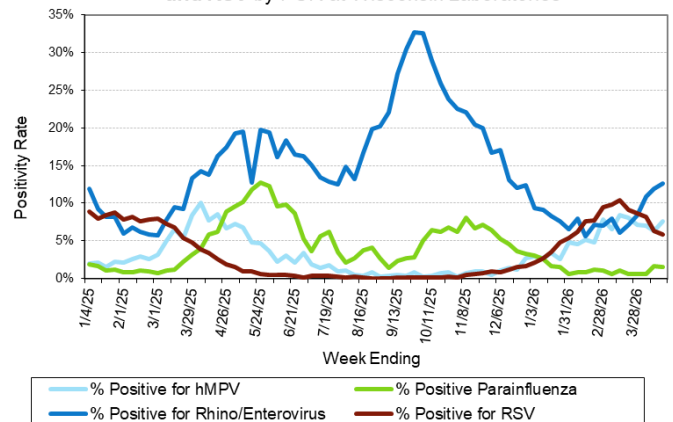
Registration Open!

[CLICK HERE](#)

OR



Positivity Rate of hMPV, Parainfluenza, Rhino/Enterovirus and RSV by PCR at Wisconsin Laboratories



Laboratory Surveillance Report

Enteric Pathogens

Week Ending 4/18/26

	# Tested	% Positive
Norovirus***	570	10.9%
Rotavirus	589	8.3%
Astrovirus	512	3.5%
Sapovirus	512	2.5%
<i>Campylobacter</i>	662	2.3%
<i>Salmonella</i>	660	1.4%
Adenovirus 40/41	512	1.4%
<i>Giardia</i>	621	1.1%
<i>Yersinia enterocolitica</i>	628	0.8%
<i>Cryptosporidium</i>	621	0.6%
<i>Plesiomonas shigelloides</i>	551	0.4%
<i>Vibrio</i>	581	0.3%
STEC	660	0.2%
<i>Cyclospora</i>	512	0.2%
<i>Entamoeba histolytica</i>	621	0.2%
Aeromonas	50	0.0%
<i>E. coli</i> 0157	239	0.0%
<i>Shigella</i> /EIEC	660	0.0%

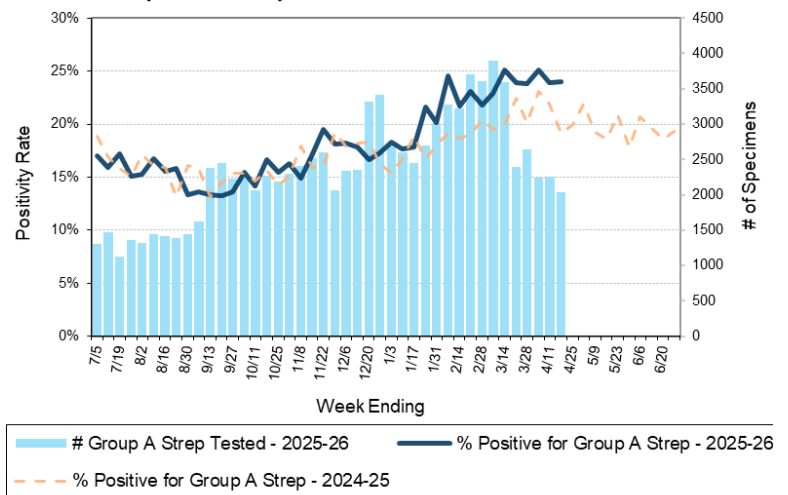
***BioMerieux has announced an increased risk of false positive norovirus results with the BioFire FilmArray GI panel, which may increase the statewide norovirus percent positivity **

Respiratory Pathogens

Week Ending 4/18/26

	# Tested	% Positive
Rhinovirus/Enterovirus	1310	12.7%
Human metapneumovirus	955	7.6%
RSV	6575	5.8%
Influenza	7284	5.1%
Seasonal coronaviruses	788	4.9%
Parainfluenza	895	1.6%
SARS-CoV-2	7238	1.4%
Adenovirus	932	1.3%
<i>Bordetella pertussis</i>	605	0.2%

Number Tested and Positivity Rate for Group A *Streptococcus* by PCR at Wisconsin Laboratories



Additional Information

- Additional Information on avian influenza testing and influenza surveillance at WSLH: <https://www.slh.wisc.edu/clinical/diseases/h5n1-highly-pathogenic-avian-influenza-update/>
- Additional information on respiratory pathogens can be found on the DHS website: <https://www.dhs.wisconsin.gov/disease/respiratory.htm>
- Activity graphs for a variety of respiratory pathogens can be found on the DHS Respiratory Illness Dashboard: <https://www.dhs.wisconsin.gov/disease/laboratory-based-data.htm>
- Activity graphs for a variety of gastrointestinal pathogens can be found on the WSLH website: <http://www.slh.wisc.edu/wcln-surveillance/surveillance/gastropathogen-surveillance/>

To subscribe to this report, email WCLN@slh.wisc.edu