

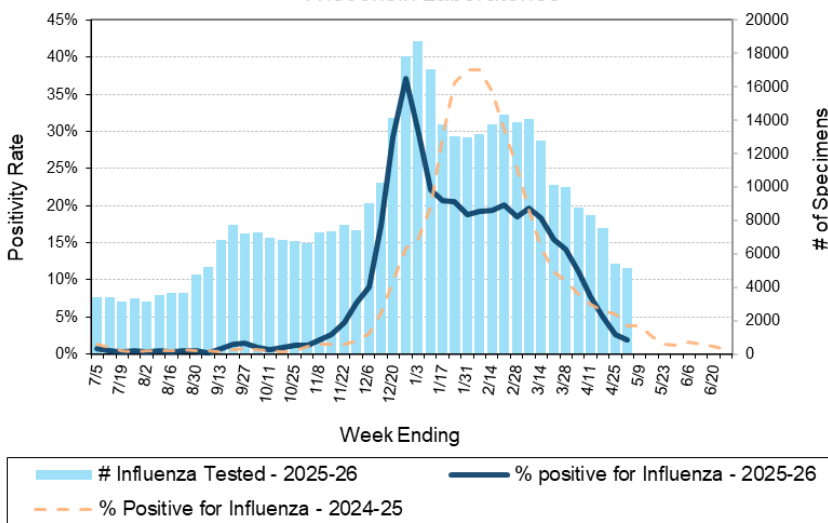
# Laboratory Surveillance Report

\*\* For a selection of pathogens, participating Wisconsin clinical laboratories voluntarily report to WSLH on a weekly basis the total number of tests performed, and the number of those tests with positive results.

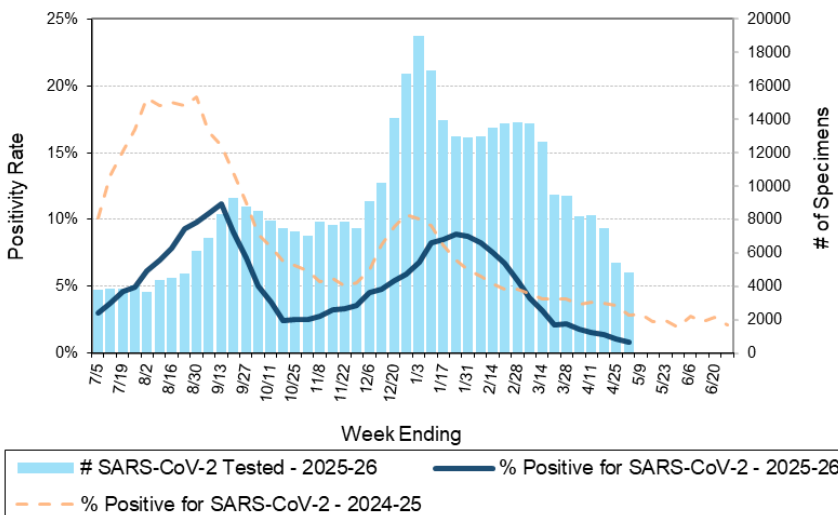
## To Enhance Surveillance Activities, Please Send:

- **All Testing Sites:**
  - ◇ **Two influenza-related hospitalizations per week**
  - ◇ **ALL Influenza A positive specimens:**
    - From patients admitted to the ICU
    - With swine, bovine or poultry exposure
    - With international travel history
    - That fail to subtype as H1 or H3 (Ct <35)
  - ◇ **Up to 5 SARS-CoV-2 positive specimens per week**
  - ◇ **All Enterovirus positive CSF specimens**

Number Tested and Positivity Rate for Influenza by PCR at Wisconsin Laboratories



Number Tested and Positivity Rate for SARS-CoV-2 by PCR at Wisconsin Laboratories



## Respiratory Snapshot:

- Influenza activity is **decreasing** in Wisconsin (1.9%) and nationally (3.1%)
  - Nationally, **Influenza B** is the dominant type circulating (83%).
- Rhinovirus/Enterovirus (24.9%) and hMPV (5.5%) activities are moderate in Wisconsin.

## Enteric Snapshot:

- Norovirus (10.9%), rotavirus (5.8%) activities are **elevated** in Wisconsin.

## Other:

- Group A *Streptococcus* activity in Wisconsin is **moderate** (20.1%).

## 34th Annual

Wisconsin Virology Conference  
Thursday, May 28th

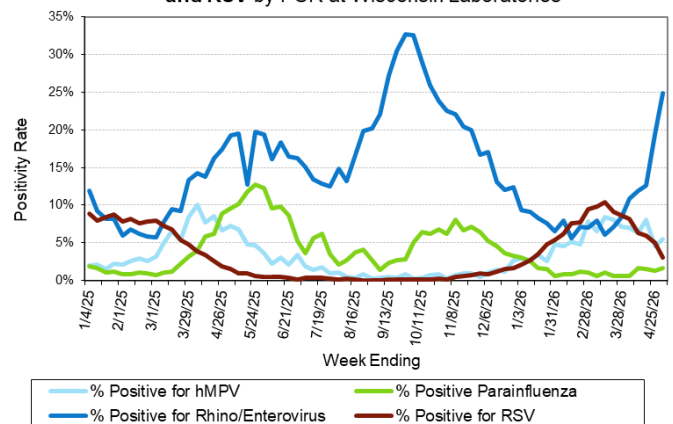
Registration Open!

[CLICK HERE](#)

OR



Positivity Rate of hMPV, Parainfluenza, Rhino/Enterovirus and RSV by PCR at Wisconsin Laboratories



# Laboratory Surveillance Report

## Enteric Pathogens

Week Ending 5/2/26

	# Tested	% Positive
Norovirus***	499	9.8%
Rotavirus	479	5.8%
Astrovirus	415	3.1%
<i>Campylobacter</i>	552	2.0%
<i>Salmonella</i>	552	1.1%
Sapovirus	415	1.0%
<i>Cryptosporidium</i>	548	0.5%
<i>Giardia</i>	548	0.5%
<i>Yersinia enterocolitica</i>	552	0.4%
STEC	552	0.2%
<i>Vibrio</i>	506	0.2%
Adenovirus 40/41	415	0.2%
<i>Entamoeba histolytica</i>	499	0.2%
<i>Aeromonas</i>	35	0.0%
<i>E. coli</i> 0157	230	0.0%
<i>Plesiomonas shigelloides</i>	448	0.0%
<i>Shigella</i> /EIEC	552	0.0%
<i>Cyclospora</i>	424	0.0%

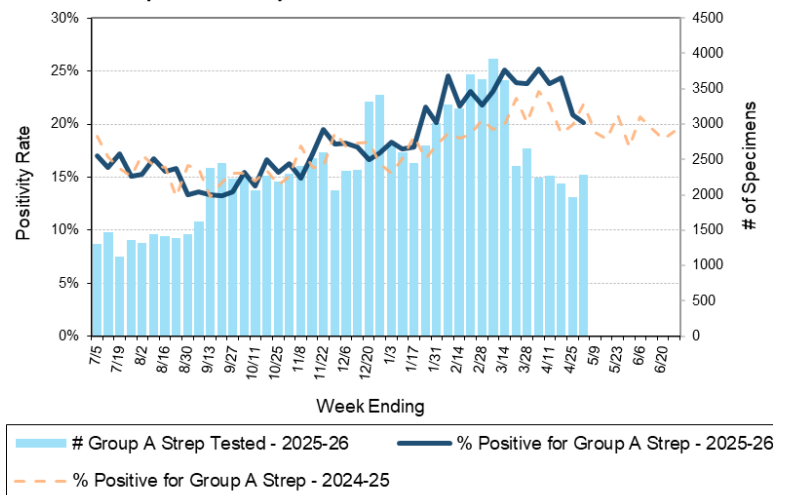
\*\*\*BioMerieux has announced an increased risk of false positive norovirus results with the BioFire FilmArray GI panel, which may increase the statewide norovirus percent positivity \*\*

## Respiratory Pathogens

Week Ending 5/2/26

	# Tested	% Positive
Rhinovirus/Enterovirus	1169	24.9%
Human metapneumovirus	807	5.5%
RSV	4861	3.1%
Seasonal coronaviruses	668	2.5%
Influenza	5131	1.9%
Parainfluenza	758	1.6%
Adenovirus	791	1.5%
SARS-CoV-2	4849	0.8%
<i>Bordetella pertussis</i>	598	0.2%

Number Tested and Positivity Rate for Group A *Streptococcus* by PCR at Wisconsin Laboratories



## Additional Information

- Additional Information on avian influenza testing and influenza surveillance at WSLH: <https://www.slh.wisc.edu/clinical/diseases/h5n1-highly-pathogenic-avian-influenza-update/>
- Additional information on respiratory pathogens can be found on the DHS website: <https://www.dhs.wisconsin.gov/disease/respiratory.htm>
- Activity graphs for a variety of respiratory pathogens can be found on the DHS Respiratory Illness Dashboard: <https://www.dhs.wisconsin.gov/disease/laboratory-based-data.htm>
- Activity graphs for a variety of gastrointestinal pathogens can be found on the WSLH website: <http://www.slh.wisc.edu/wcln-surveillance/surveillance/gastropathogen-surveillance/>

To subscribe to this report, email [WCLN@slh.wisc.edu](mailto:WCLN@slh.wisc.edu)