

Laboratory Surveillance Report

** For a selection of pathogens, participating Wisconsin clinical laboratories voluntarily report to WSLH on a weekly basis the total number of tests performed, and the number of those tests with positive results.

To Enhance Surveillance Activities, Please Send:

- **All Testing Sites:**
 - ◇ **Two influenza-related hospitalizations per week**
 - ◇ **ALL Influenza A positive specimens:**
 - **From patients admitted to the ICU**
 - **With swine, bovine or poultry exposure**
 - With international travel history
 - That fail to subtype as H1 or H3 (Ct <35)
 - ◇ **Up to 5 SARS-CoV-2 positive specimens per week**
 - ◇ **All Enterovirus positive CSF specimens**

Respiratory Snapshot:

- Influenza activity is **decreasing** in Wisconsin (1.1%) and nationally (1.9%)
 - Nationally, **Influenza B** is the dominant type circulating (83%).
- Rhinovirus/Enterovirus (25.8%) activity is high in Wisconsin.

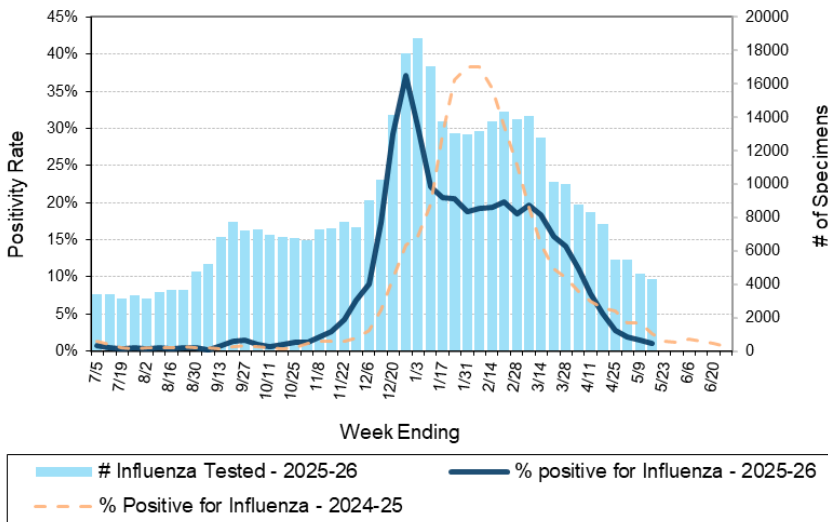
Enteric Snapshot:

- Norovirus (6.9%), rotavirus (5.5%) and *Campylobacter* (2.6%) activities are **elevated** in Wisconsin.

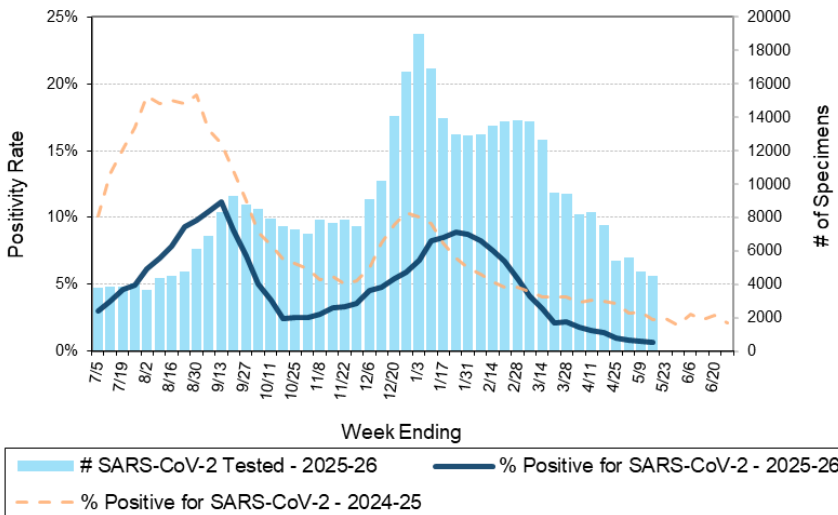
Other:

- Group A *Streptococcus* activity in Wisconsin is **moderate** (22.2%).

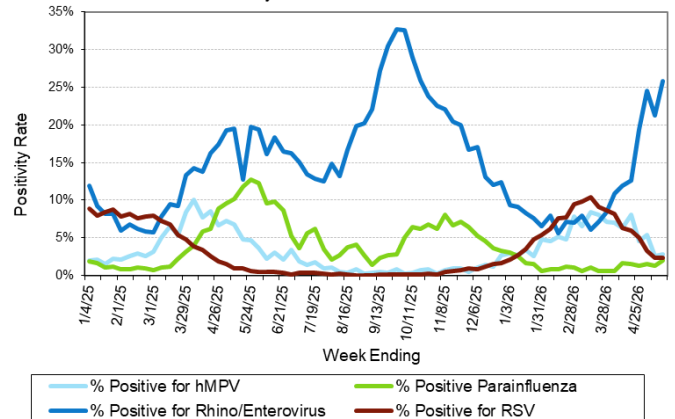
Number Tested and Positivity Rate for Influenza by PCR at Wisconsin Laboratories



Number Tested and Positivity Rate for SARS-CoV-2 by PCR at Wisconsin Laboratories



Positivity Rate of hMPV, Parainfluenza, Rhino/Enterovirus and RSV by PCR at Wisconsin Laboratories





34th Annual



Wisconsin Virology Conference

Thursday, May 28th

Laboratory Surveillance Report

Enteric Pathogens

Week Ending 5/16/26

	# Tested	% Positive
Norovirus***	449	6.9%
Rotavirus	421	5.5%
<i>Campylobacter</i>	577	2.6%
<i>Salmonella</i>	586	1.9%
Astrovirus	313	1.6%
Sapovirus	313	1.0%
STEC	567	0.9%
<i>Cryptosporidium</i>	459	0.7%
<i>Yersinia enterocolitica</i>	478	0.4%
<i>Shigella/EIEC</i>	517	0.2%
<i>Entamoeba histolytica</i>	417	0.2%
<i>Giardia</i>	459	0.2%
<i>Aeromonas</i>	40	0.0%
<i>E. coli</i> 0157	95	0.0%
<i>Plesiomonas shigelloides</i>	345	0.0%
<i>Vibrio</i>	426	0.0%
Adenovirus 40/41	313	0.0%
<i>Cyclospora</i>	313	0.0%

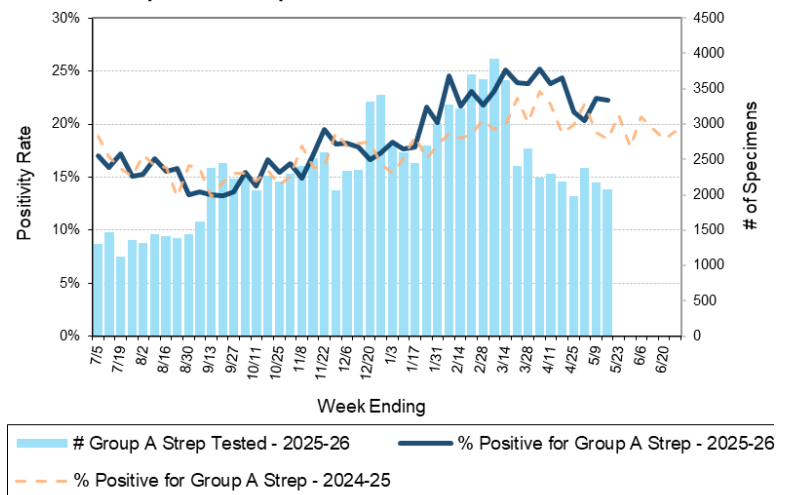
***BioMerieux has announced an increased risk of false positive norovirus results with the BioFire FilmArray GI panel, which may increase the statewide norovirus percent positivity **

Respiratory Pathogens

Week Ending 5/16/26

	# Tested	% Positive
Rhinovirus/Enterovirus	1126	25.8%
Human metapneumovirus	799	2.8%
RSV	4087	2.3%
Parainfluenza	763	2.0%
Adenovirus	796	1.6%
Influenza	4324	1.1%
Seasonal coronaviruses	694	1.0%
SARS-CoV-2	4494	0.7%
<i>Bordetella pertussis</i>	645	0.0%

Number Tested and Positivity Rate for Group A *Streptococcus* by PCR at Wisconsin Laboratories



Additional Information

- Additional Information on avian influenza testing and influenza surveillance at WSLH: <https://www.slh.wisc.edu/clinical/diseases/h5n1-highly-pathogenic-avian-influenza-update/>
- Additional information on respiratory pathogens can be found on the DHS website: <https://www.dhs.wisconsin.gov/disease/respiratory.htm>
- Activity graphs for a variety of respiratory pathogens can be found on the DHS Respiratory Illness Dashboard: <https://www.dhs.wisconsin.gov/disease/laboratory-based-data.htm>
- Activity graphs for a variety of gastrointestinal pathogens can be found on the WSLH website: <http://www.slh.wisc.edu/wcln-surveillance/surveillance/gastropathogen-surveillance/>

To subscribe to this report, email WCLN@slh.wisc.edu