

Laboratory Surveillance Report

** For a selection of pathogens, participating Wisconsin clinical laboratories voluntarily report to WSLH on a weekly basis the total number of tests performed, and the number of those tests with positive results.

To Enhance Surveillance Activities, Please Send:

- **All Testing Sites:**
 - ◇ **Two influenza-related hospitalizations per week**
 - ◇ **ALL Influenza A positive specimens:**
 - **From patients admitted to the ICU**
 - **With swine, bovine or poultry exposure**
 - With international travel history
 - That fail to subtype as H1 or H3 (Ct <35)
 - ◇ **Up to 5 SARS-CoV-2 positive specimens per week**
 - ◇ **All Enterovirus positive CSF specimens**

Respiratory Snapshot:

- Influenza activity is **low** in Wisconsin (1.7%) and nationally (0.8%)
- Rhinovirus/Enterovirus (13.7%) and parainfluenza (7.1%) activities are moderate in Wisconsin.

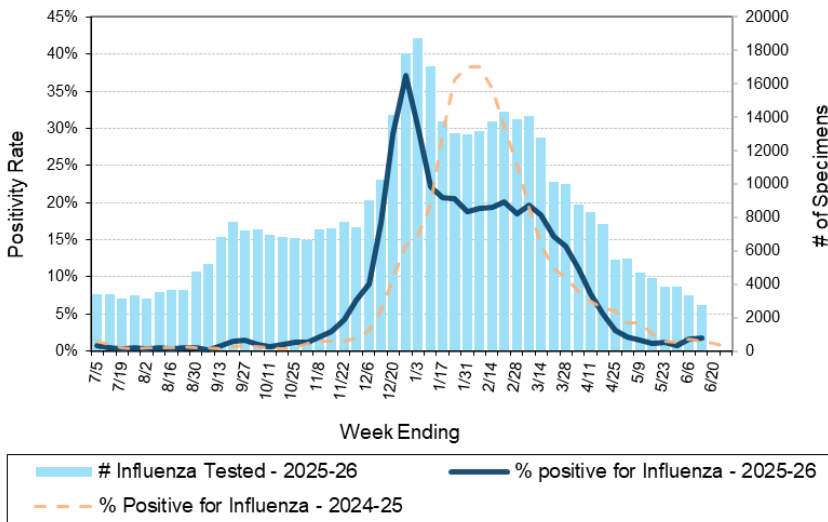
Enteric Snapshot:

- Norovirus (11.4%), rotavirus (3.5%), *Campylobacter* (3.5%) and *Salmonella* (3.4%) activities are **elevated** in Wisconsin.

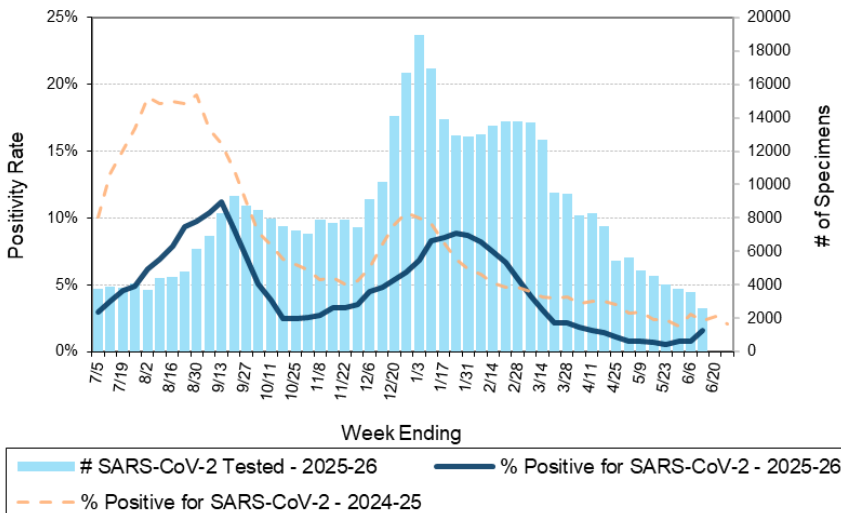
Other:

- Group A *Streptococcus* activity in Wisconsin is **moderate** (21.7%).

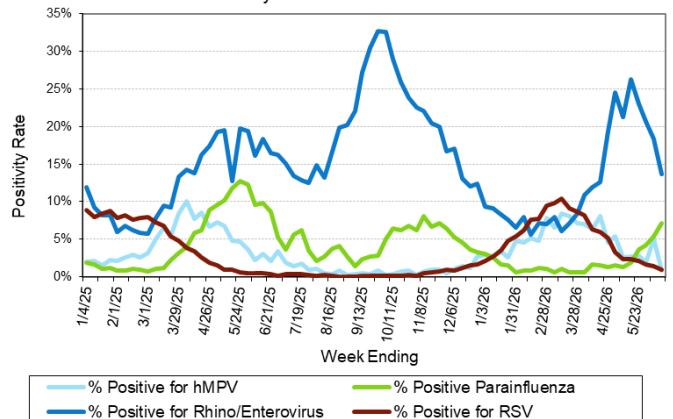
Number Tested and Positivity Rate for Influenza by PCR at Wisconsin Laboratories



Number Tested and Positivity Rate for SARS-CoV-2 by PCR at Wisconsin Laboratories



Positivity Rate of hMPV, Parainfluenza, Rhino/Enterovirus and RSV by PCR at Wisconsin Laboratories



Laboratory Surveillance Report

Enteric Pathogens

Week Ending 6/13/26

	# Tested	% Positive
Norovirus***	307	11.4%
<i>Campylobacter</i>	376	3.5%
Rotavirus	284	3.5%
<i>Salmonella</i>	379	3.4%
STEC	472	1.5%
<i>Plesiomonas shigelloides</i>	273	1.1%
Adenovirus 40/41	247	0.8%
Astrovirus	247	0.8%
<i>Cyclospora</i>	247	0.8%
<i>Giardia</i>	297	0.7%
<i>Yersinia enterocolitica</i>	348	0.6%
Sapovirus	247	0.4%
<i>Shigella/EIEC</i>	379	0.3%
<i>Cryptosporidium</i>	297	0.3%
<i>E. coli</i> 0157	250	0.0%
<i>Aeromonas</i>	46	0.0%
<i>Vibrio</i>	326	0.0%
<i>Entamoeba histolytica</i>	259	0.0%

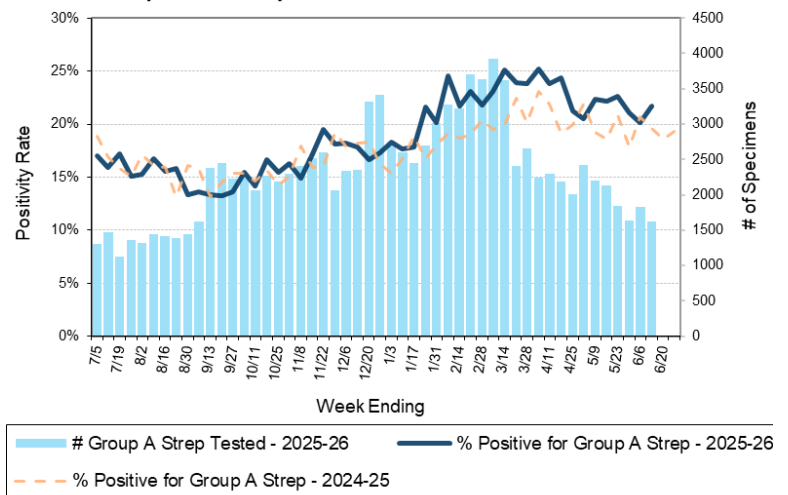
***BioMerieux has announced an increased risk of false positive norovirus results with the BioFire FilmArray GI panel, which may increase the statewide norovirus percent positivity **

Respiratory Pathogens

Week Ending 6/13/26

	# Tested	% Positive
Rhinovirus/Enterovirus	878	13.7%
Parainfluenza	633	7.1%
Adenovirus	662	2.7%
Influenza	2720	1.7%
SARS-CoV-2	2567	1.6%
RSV	2615	1.0%
Human metapneumovirus	603	0.8%
Seasonal coronaviruses	471	0.6%
<i>Bordetella pertussis</i>	584	0.0%

Number Tested and Positivity Rate for Group A *Streptococcus* by PCR at Wisconsin Laboratories



Additional Information

- Additional Information on avian influenza testing and influenza surveillance at WSLH: <https://www.slh.wisc.edu/clinical/diseases/h5n1-highly-pathogenic-avian-influenza-update/>
- Additional information on respiratory pathogens can be found on the DHS website: <https://www.dhs.wisconsin.gov/disease/respiratory.htm>
- Activity graphs for a variety of respiratory pathogens can be found on the DHS Respiratory Illness Dashboard: <https://www.dhs.wisconsin.gov/disease/laboratory-based-data.htm>
- Activity graphs for a variety of gastrointestinal pathogens can be found on the WSLH website: <http://www.slh.wisc.edu/wcln-surveillance/surveillance/gastropathogen-surveillance/>

To subscribe to this report, email WCLN@slh.wisc.edu